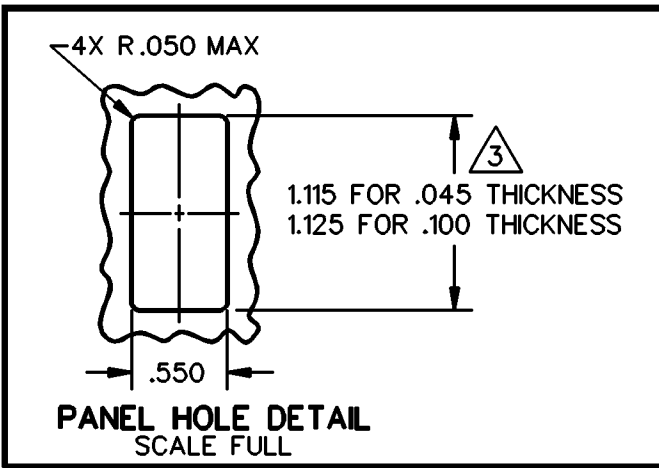
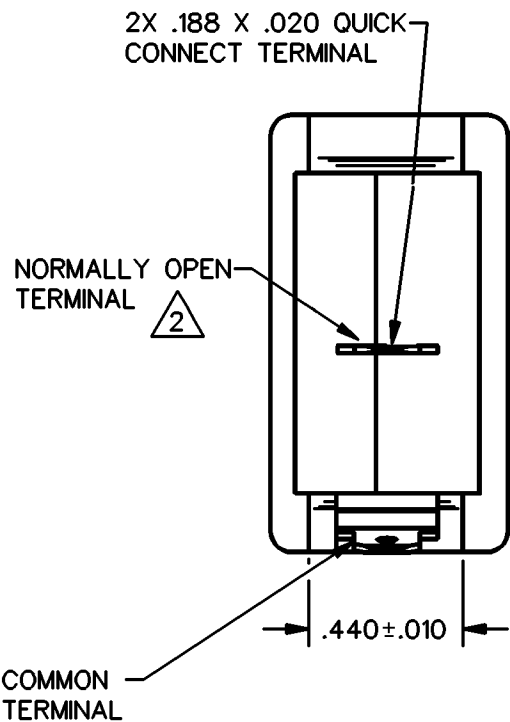
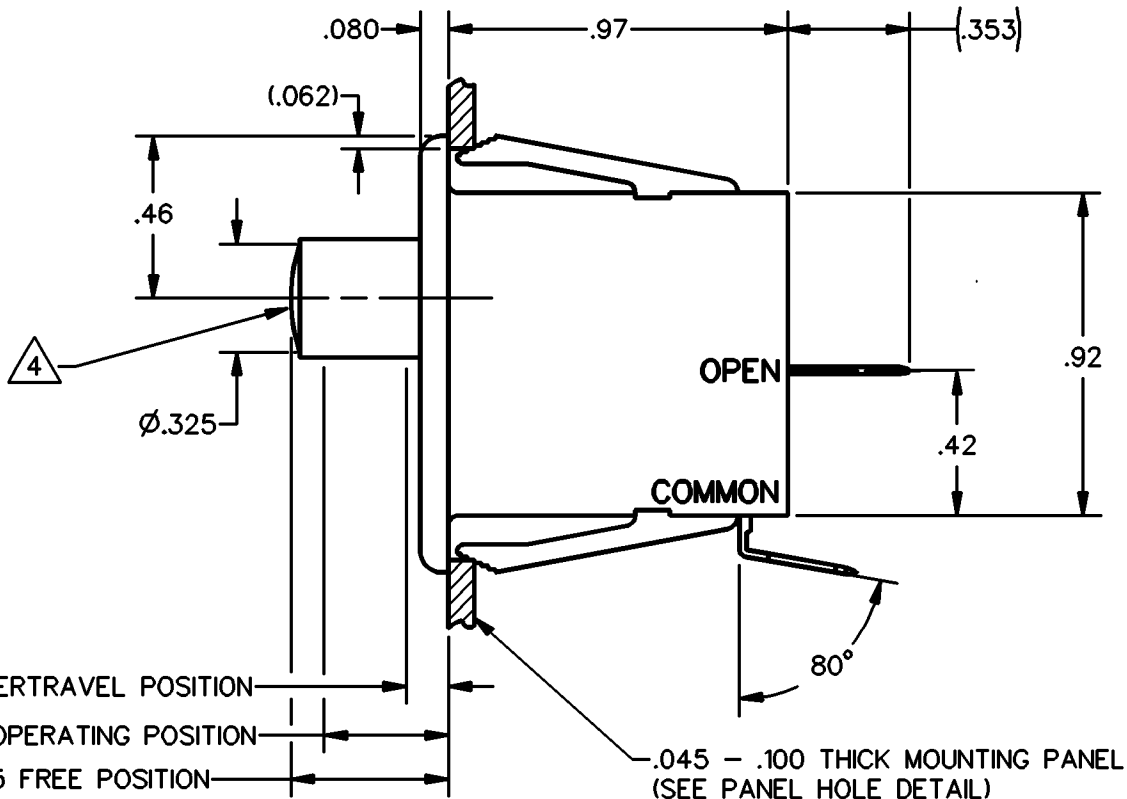
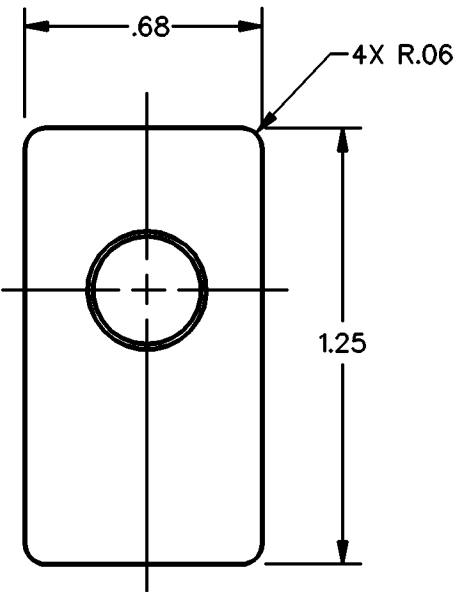
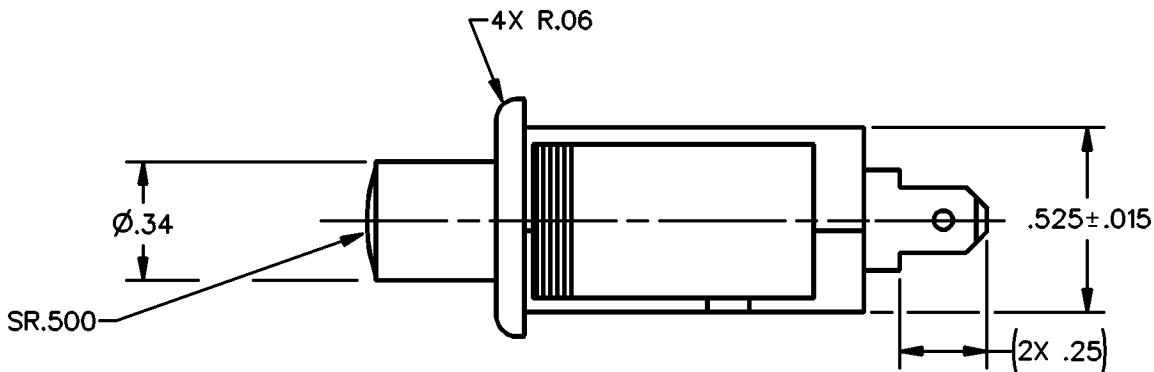


HONEYWELL

PART NUMBER


1DM23

| REV | DOCUMENT | CHANGED BY | CHECK |
|-----|----------|-------------|-------|
| A | 0055222 | VKR 31JUL09 | CMH |



- NOTES
- 1 WHITE PLASTIC CASE AND PLUNGER
 - 2 FLAG STYLE QUICK CONNECT RECEPTACLE REQUIRED FOR NORMALLY OPEN TERMINAL IF SWITCH IS WIRED BEFORE MOUNTING
 - 3 NOMINAL CUTOUT DIMENSION FOR PANELS BETWEEN .045 AND .100 SHOULD BE INTERPOLATED BETWEEN 1.115 AND 1.125
 - 4 PUSH TO OPERATE - MOMENTARY

| CHARACTERISTICS | ELECTRICAL DATA |
|---|--------------------------------|
| OPERATING FORCE - - - - - 15 OZ MAX | CONTACT ARRANGEMENT S P N O |
| RELEASE FORCE - - - - - 3 OZ MIN | |
| OVERTRAVEL - - - - - .235 MIN | L181 |
| PLUNGER FORCE AT .375 OVERTRAVEL 21 OZ MAX | 10A 1/2HP 125, 250 OR 277 VAC |

| | | | | | | | | | | | |
|--|--|-----|---------|-------------------------------|------|-----------|--------------|-------|-----|----|---|
| DESIGN UNITS: INCH TOLERANCES UNLESS NOTED: NO PLACE X ± .040 ONE PLACE .X ± .030 TWO PLACE .XX ± .015 THREE PLACE .XXX ± .005 ANGLES X ± - THIRD ANGLE PROJECTION  | DRAWN | TGP | 12MAY09 | Honeywell | | | | | | | |
| | CHECK | RJ | 12MAY09 | | | | | | | | |
| | THIS DRAWING COVERS A PROPRIETARY ITEM AND IS THE PROPERTY OF HONEYWELL. THIS DRAWING IS NOT TO BE COPIED OR USED WITHOUT THE PERMISSION OF HONEYWELL. | | | TITLE SWITCH, BASIC | | | | | | | |
| | INTERPRET PER ASME Y14.5M-1994 OTHER HONEYWELL ENGINEERING STANDARDS MAY APPLY | | | SIZE | TYPE | CAGE CODE | DRAWING NAME | | REV | | |
| | RASTER | | | B | I | - | IDM23 | | A | | |
| | | | SCALE | NTS | | | | SHEET | 1 | OF | 1 |