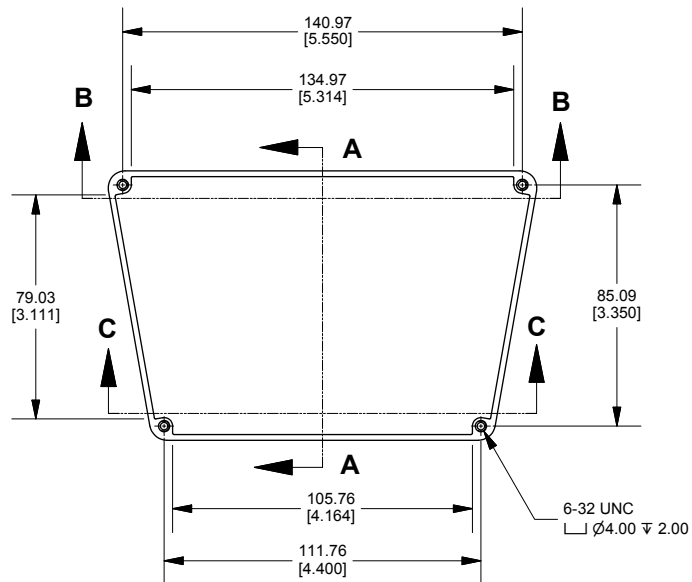
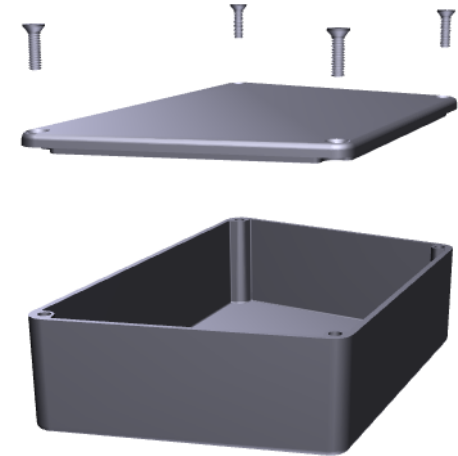
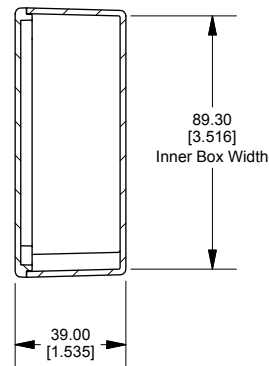


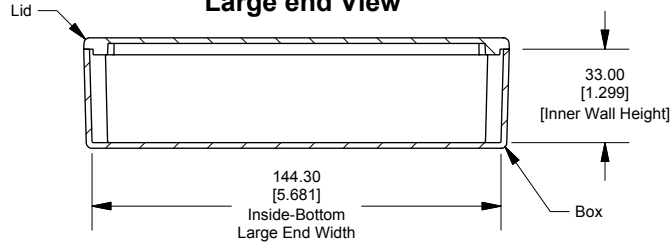
**Top View Looking inside Box**



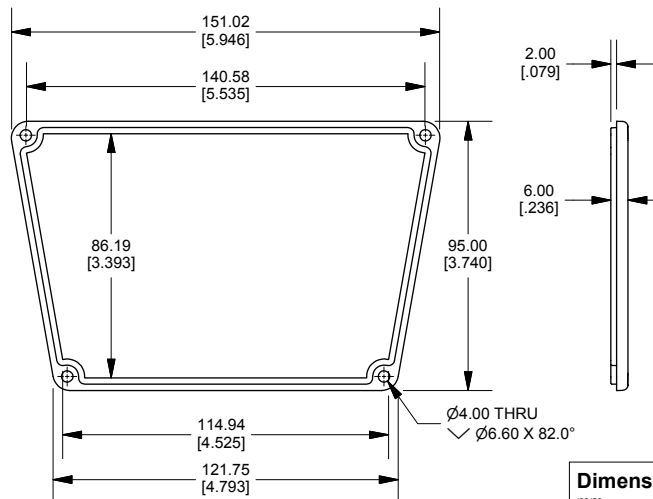
**SECTION A-A  
Side View of Assembly**



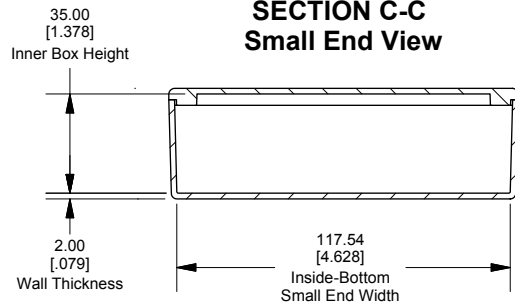
**SECTION B-B  
Large end View**



**Lid**



**SECTION C-C  
Small End View**



Enclosures can be Factory Modified ( Milling, Drilling, Printing etc.)  
Contact Factory [mjm@hammondmfg.com](mailto:mjm@hammondmfg.com) for quotes  
Solid models of this enclosure available in STEP or IGES.

**NOTE**

Purchased assembly includes box, lid and 4 cover screws.  
Box and lid are made from Diecast Aluminum Alloy.

**PART NUMBERS**

**1590TRPC Enclosure**

**Natural Finish Enclosure**

1590TRPC

**Black Textured Enclosure**

1590TRPCBK

**ACCESSORIES**

**Recommended Torque: 75 ozf.in / 55 cN.m**

**Plated Cover Screws (Pkg 100)**

[6-32 x 1/2"]

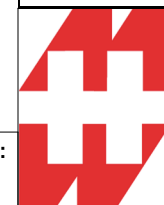
1590MS100

**Black Cover Screws (Pkg 100)**

[6-32 x 1/2"]

1590MS100BK

**Dimensions:**  
mm  
[inches]



**HAMMOND  
MANUFACTURING™**

**1590TRPC**

[www.hammondmfg.com](http://www.hammondmfg.com)