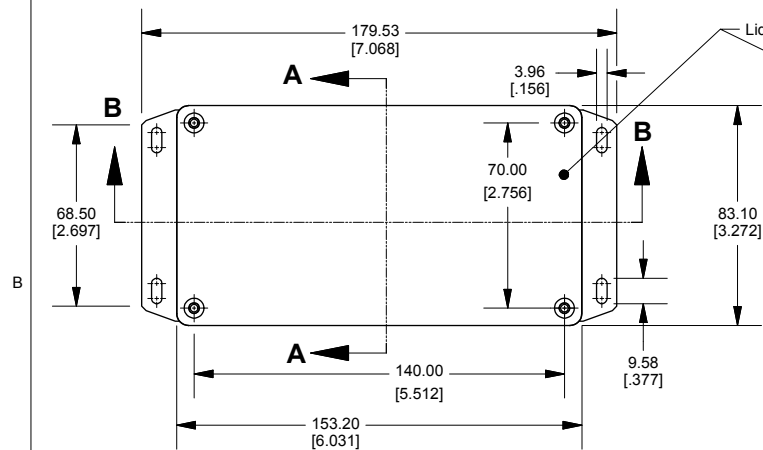
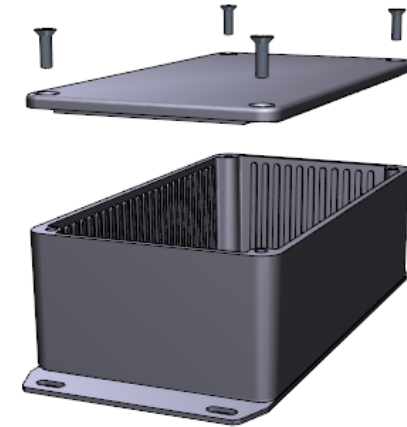
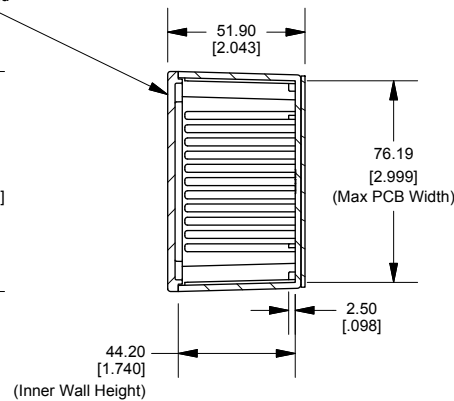


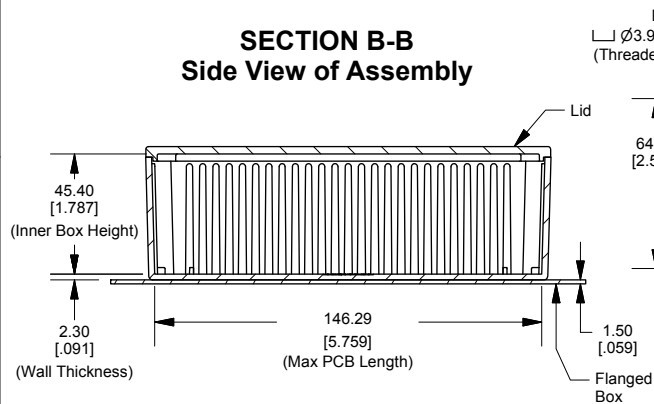
# Top View of Assembly



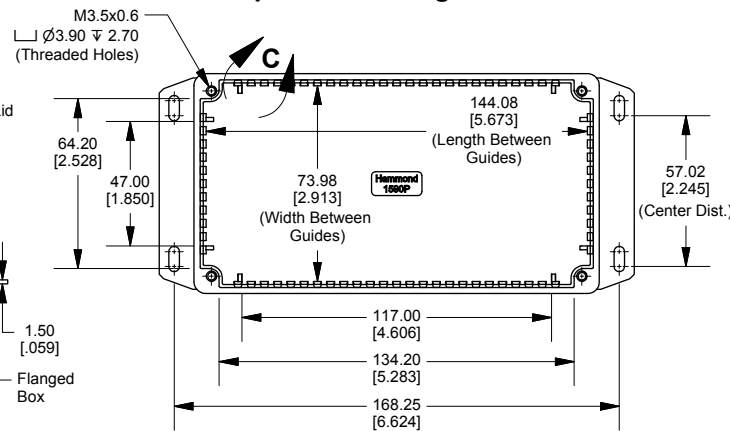
# SECTION A-A End View of Assembly



# SECTION B-B Side View of Assembly



# Top View Looking Inside Box



Enclosures can be Factory Modified ( Milling, Drilling, Printing etc.)  
Contact Factory [mjm@hammondmg.com](mailto:mjm@hammondmg.com) for quotes  
Solid models of this enclosure available in STEP or IGES.

## NOTE

Purchased assembly includes box, lid and 4 cover screws.  
Box and lid are made from Diecast Aluminum Alloy.  
Silicone Gasket supplied with liquid resistant enclosure.  
Bottom Flange is Welded.

## PART NUMBERS

1590PF Enclosure	
Natural Finish Enclosure	1590PF
Black Textured Enclosure	1590PFBK
1590PF Liquid Resistant Enclosure (Silicone Gasket)	
Natural Finish Enclosure	1590WPF
Black Textured Enclosure	1590WPFBK

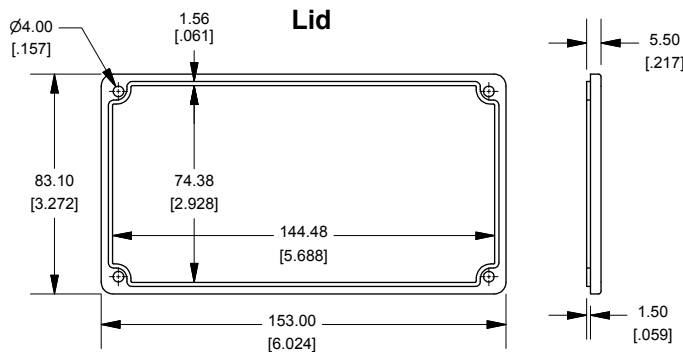
## ACCESSORIES

Recommended Torque: 75 ozf.in / 55 cN.m

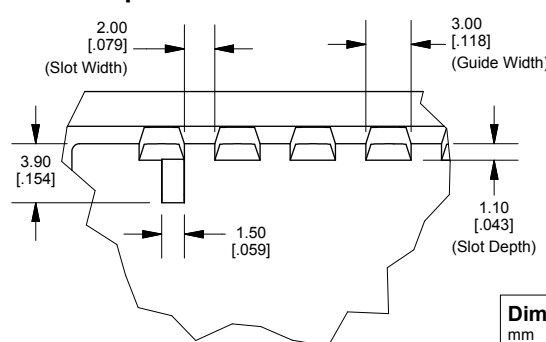
## Liquid Resistant Cover Screws

Stainless Steel Cover Screws (Pkg 100)	
[M3.5 x 12mm, With O-Ring]	1550WMS100
Black Stainless Steel Cover Screws (Pkg 100)	
[M3.5 x 12mm, With O-Ring]	1550WMS100BK
Standard Cover Screws	
Plated Cover Screws (Pkg 100)	1550MS100
[M3.5 x 12mm]	
Black Cover Screws (Pkg 100)	1550MS100BK
[M3.5 x 12mm]	

## Lid



## DETAIL C Top View - Interior Features



Dimensions:  
mm  
[inches]

