

6

5

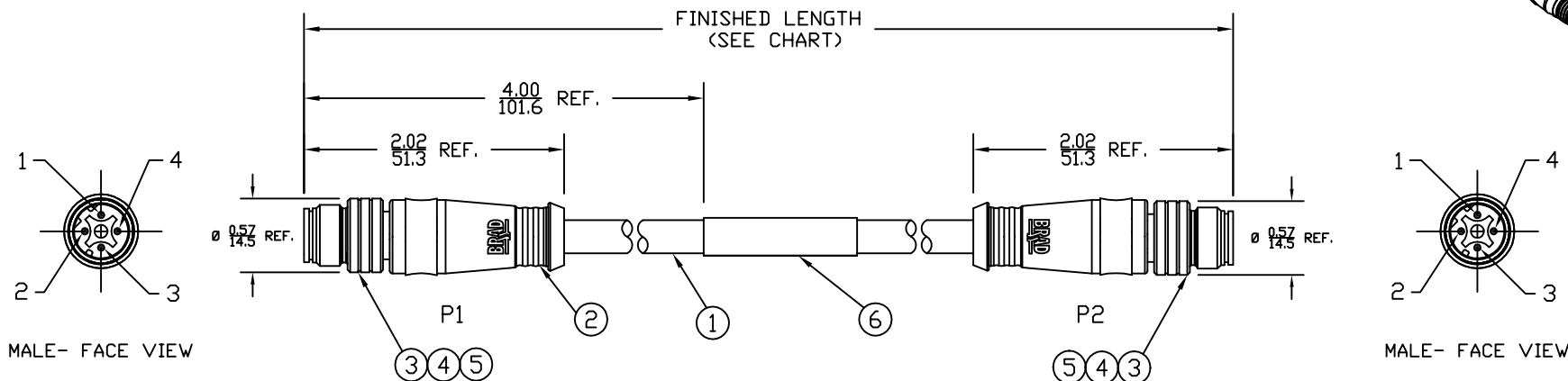
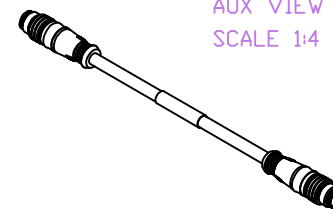
4

3

2

1

PART NUMBER	ENGINEERING NO.	LENGTH ± TOLERANCE
1300480114	E11A06010M010	3' 3" +2.19"/-0" [ 1M +55.6/-0 mm ]
1300480116	E11A06010M050	16' 4" +6.5"/-0" [ 5M +165.0/-0 mm ]

AUX VIEW  
SCALE 1:4



P1		P2
1	YELLOW	1
2	WHITE	2
3	ORANGE	3
4	BLUE	4

WIRING DIAGRAM

## NOTES:

- 1) MATERIAL: SEE TABLE
- 2) FINISHES: SEE TABLE
- 3) CABLE: #22/4 SHIELDED PUR
- 4) ELECTRICAL DATA:  
ACCORDING TO CAT5e ETHERNET STANDARD  
MAX. VOLTAGE: 30V  
MAX. CURRENT 1.5A
- 5) ENVIRONMENTAL:  
PROTECTION IP67  
TEMPERATURE RANGE: -20°C TO 75°C
- 6) WRAP LABEL IS MARKED WITH P/N, DATE CODE,  
VOLTAGE & AMPERAGE.
- 7) ASSEMBLY IS RoHS COMPLIANT.

ITEM	QTY.	DESCRIPTION	MATERIAL	FINISH
6	1	LABEL	PLASTIC FILM	BLACK/YELLOW
5	2	INSERT	PUR	BLACK
4	8	PIN CONTACT	COPPER ALLOY	GOLD PLATED
3	2	M12 COUPLING NUT	BRASS	NICKEL
2	2	OVERMOLD	PUR	BLACK
1	1	ETHERNET CABLE-CAT5E	PUR JACKET	TEAL

SD RELEASE EC NO: WEU2010-0005 7/10/09 DRWN: VOU CHKD: BWOODMAN APPR: JFMURPHY 2009/07/20		DESCRIPTION	QUALITY SYMBOLS  ▽=0  ▽C=0	GENERAL TOLERANCES (UNLESS SPECIFIED)		DIMENSION STYLE IN/MM		SCALE 3:4	DESIGN UNITS INCH	 THIRD ANGLE PROJECTION	
					mm	INCH	DRAWN BY VOU		DATE 2009/07/06	TITLE MICRO-CHANGE CABLE ASSY 4P M/MP ST/ST D-CODE #22/4 SHIELDED PUR	
				4 PLACES	±----	±----	CHECKED BY BWOODMAN		DATE 2009/07/31		
				3 PLACES	±----	±.005	APPROVED BY ---		DATE ---	 MOLEX INCORPORATED	
				2 PLACES	±----	±.010					
				1 PLACE	±----	±.020	MATERIAL NO. SEE CHART		DOCUMENT NO. SD-120108-019	SHEET NO. 1 OF 1	
				ANGULAR ±1/2°		DRAFT WHERE APPLICABLE MUST REMAIN WITHIN DIMENSIONS		SIZE A	THIS DRAWING CONTAINS INFORMATION THAT IS PROPRIETARY TO MOLEX INCORPORATED AND SHOULD NOT BE USED WITHOUT WRITTEN PERMISSION		