



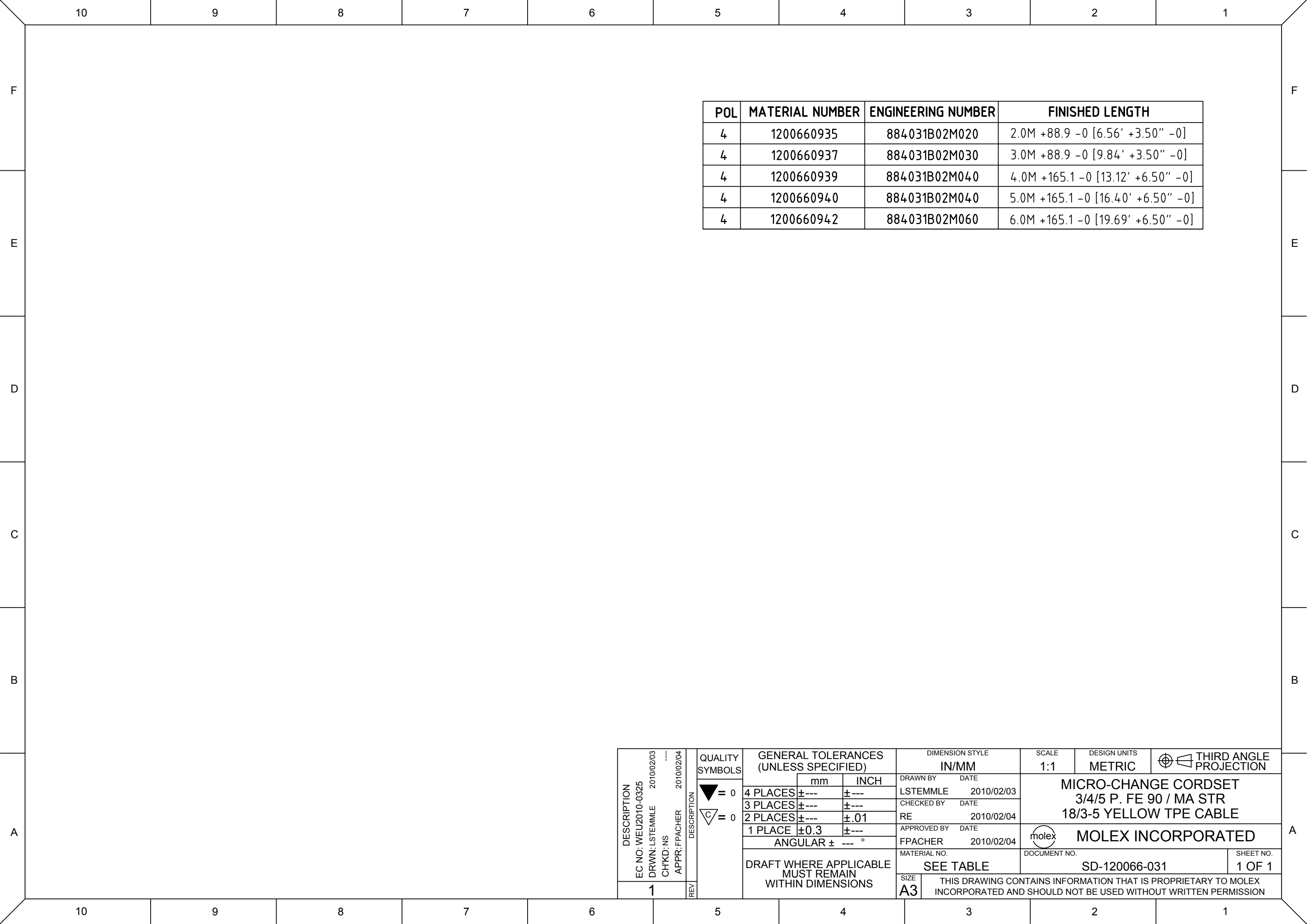


CONNECTOR SPECIFICATION:

VOLTAGE RATING	250 VAC/VDC
AMPERAGE RATING	max. 4 AMPS
PROTECTION	IP67
OPERATING TEMPERATURE	-20°C TO 80°C
UL CERTIFICATIONS	UL RECOGNIZED, FILE NO. E152210
CSA CERTIFICATIONS	LR6837

ITEM	COMPONENT	MATERIAL	FINISH
7	LABLE	MYLAR	BLACK/YELLOW
6	O-RING	VITON	RED
5	COUPLER	BRASS	NICKEL PLATED
4	SOCKET/PIN CONTACT	COPPER ALLOY	GOLD OVER NICKEL
3	INSERT	NYLON	BLACK
2	OVERMOLD	TPE	YELLOW
1	CABLE- 18/3-5 (COPPER STRANDING) 3/4/5 CONDUCT. 300V	TPE JACKET	YELLOW

DESCRIPTION EC NO: WEU2010-0325 DRWN: LSTEMMLE 2010/02/03 CHKD: NS APPR: FPACHER 2010/02/04	DESCRIPTION	QUALITY SYMBOLS	GENERAL TOLERANCES (UNLESS SPECIFIED)			DIMENSION STYLE IN/MM		SCALE 1:1	DESIGN UNITS METRIC	 THIRD ANGLE PROJECTION			
			 = 0  = 0		mm	INCH	DRAWN BY LSTEMMLE	DATE 2010/02/03	MICRO-CHANGE CORDSET 3/4/5 P. FE 90 / MA STR 18/3-5 YELLOW TPE CABLE				
		4 PLACES		±---	±---	CHECKED BY	DATE 2010/02/04						
		3 PLACES		±---	±---	RE							
		2 PLACES		±---	±.01	APPROVED BY	DATE 2010/02/04	 MOLEX INCORPORATED					
		1 PLACE		±0.3	±---	FPACHER	2010/02/04						
		ANGULAR ± --- °			MATERIAL NO. SEE TABLE SHEET 2		DOCUMENT NO. SD-120066-031		SHEET NO. 1 OF 1				
		DRAFT WHERE APPLICABLE MUST REMAIN WITHIN DIMENSIONS											
					SIZE A3	THIS DRAWING CONTAINS INFORMATION THAT IS PROPRIETARY TO MOLEX INCORPORATED AND SHOULD NOT BE USED WITHOUT WRITTEN PERMISSION							



POL	MATERIAL NUMBER	ENGINEERING NUMBER	FINISHED LENGTH
4	1200660935	884031B02M020	2.0M +88.9 -0 [6.56' +3.50" -0]
4	1200660937	884031B02M030	3.0M +88.9 -0 [9.84' +3.50" -0]
4	1200660939	884031B02M040	4.0M +165.1 -0 [13.12' +6.50" -0]
4	1200660940	884031B02M040	5.0M +165.1 -0 [16.40' +6.50" -0]
4	1200660942	884031B02M060	6.0M +165.1 -0 [19.69' +6.50" -0]

DESCRIPTION EC NO: WEU2010-0325 DRWN: LSTEMMLE 2010/02/03 CHKD: NS APPR: FPACHER 2010/02/04	DESCRIPTION REV	QUALITY SYMBOLS <div>▽ = 0</div> <div><div>C</div> = 0</div>	GENERAL TOLERANCES (UNLESS SPECIFIED)			DIMENSION STYLE		SCALE	DESIGN UNITS	<div><div></div><div></div></div> THIRD ANGLE PROJECTION
						IN/MM		1:1	METRIC	
				mm	INCH	DRAWN BY	DATE	MICRO-CHANGE CORDSET 3/4/5 P. FE 90 / MA STR 18/3-5 YELLOW TPE CABLE		
			4 PLACES	±---	±---	LSTEMMLE	2010/02/03			
			3 PLACES	±---	±---	CHECKED BY	DATE			
			2 PLACES	±---	±.01	RE	2010/02/04			
			1 PLACE	±0.3	±---	APPROVED BY	DATE	<div><div></div></div> MOLEX INCORPORATED		
			ANGULAR ± --- °			FPACHER	2010/02/04			
			DRAFT WHERE APPLICABLE MUST REMAIN WITHIN DIMENSIONS			MATERIAL NO.				
						SEE TABLE		SD-120066-031	1 OF 1	
1			SIZE A3		THIS DRAWING CONTAINS INFORMATION THAT IS PROPRIETARY TO MOLEX INCORPORATED AND SHOULD NOT BE USED WITHOUT WRITTEN PERMISSION					