

6

5

4

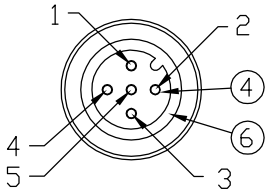
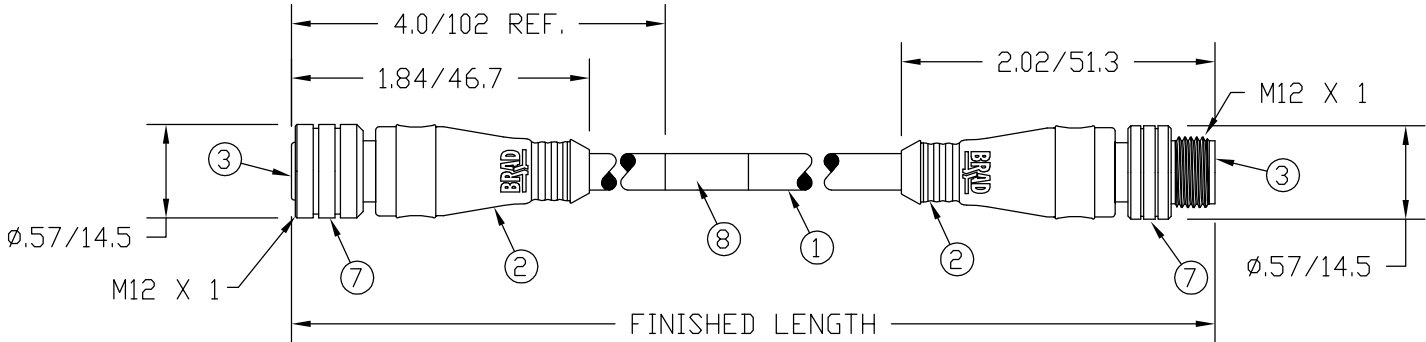
3

2

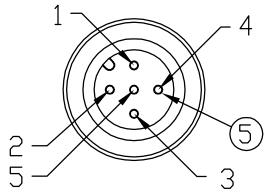
1

MATERIAL NUMBER	ENGINEERING NUMBER	FINISHED LENGTH
120066-0426	885030A09M006	.6M +44.5 -0 [1.97' +1.75' -0]
120066-0427	885030A09M010	1.0M +55.6 -0 [3.27' +2.19' -0]
120066-0429	885030A09M020	2.0M +88.9 -0 [6.56' +3.50' -0]
120066-0432	885030A09M040	4.0M +165.1 -0 [13.12' +6.50' -0]
120066-0434	885030A09M050	5.0M +165.1 -0 [16.40' +6.50' -0]

AUX VIEW
SCALE 1:2



FEMALE FACE VIEW



MALE FACE VIEW

1	BROWN	1
2	WHITE	2
3	BLUE	3
4	BLACK	4
5	GRAY	5

WIRING DIAGRAM

NOTES:

- 1) MATERIALS: SEE TABLE
- 2) FINISHES: SEE TABLE
- 3) CABLE: #22/5 TPE
- 4) ELECTRICAL DATA:
MAX. VOLTAGE: 250 VAC/VDC
MAX. CURRENT: 4 AMPS
- 5) ENVIRONMENTAL:
PROTECTION: IP67
TEMPERATURE RANGE: -20°C TO 105°C
- 6) WRAP LABEL IS MARKED WITH P/N, DATE CODE,
VOLTAGE & AMPERAGE.
- 7) ASSEMBLY IS RoHS COMPLIANT.

ITEM	QTY.	DESCRIPTION	MATERIAL	FINISH
8	1	LABEL	MYLAR	BLACK/YELLOW
7	2	COUPLER	BRASS	NICKEL PLATED
6	1	O-RING	VITON	RED
5	5	PIN CONTACT	COPPER ALLOY	GOLD OVER NICKEL
4	5	SOCKET CONTACT	COPPER ALLOY	GOLD OVER NICKEL
3	2	INSERT	NYLON	BLACK
2	2	OVERMOLD	PUR	YELLOW
1	1	#22/5 CABLE	PVC JACKET	YELLOW

RELEASED DRAWING EC NO: WEU2010-0017 DRWN: LHARTMAN 7/28/09 CHKD: BWOODMAN 09/07/29 APPR: JFMURPHY 2009/08/10	QUALITY SYMBOLS ▽=0 ▽=0	GENERAL TOLERANCES (UNLESS SPECIFIED)		DIMENSION STYLE IN/MM		SCALE 1:1	DESIGN UNITS INCH	THIRD ANGLE PROJECTION	
A	REV	DRAFT WHERE APPLICABLE MUST REMAIN WITHIN DIMENSIONS		MATERIAL NO. SEE TABLE		DOCUMENT NO. SD-120066-007		SHEET NO. 1 OF 1	