

**MICRO SWITCH**  
FREEPORT ILLINOIS U.S.A.  
A DIVISION OF HONEYWELL  
FED. MFG. CODE 91929

**SWITCH-TOGGLE**

CATALOG LISTING  
**112TW286 SERIES**  
**CHART 1**

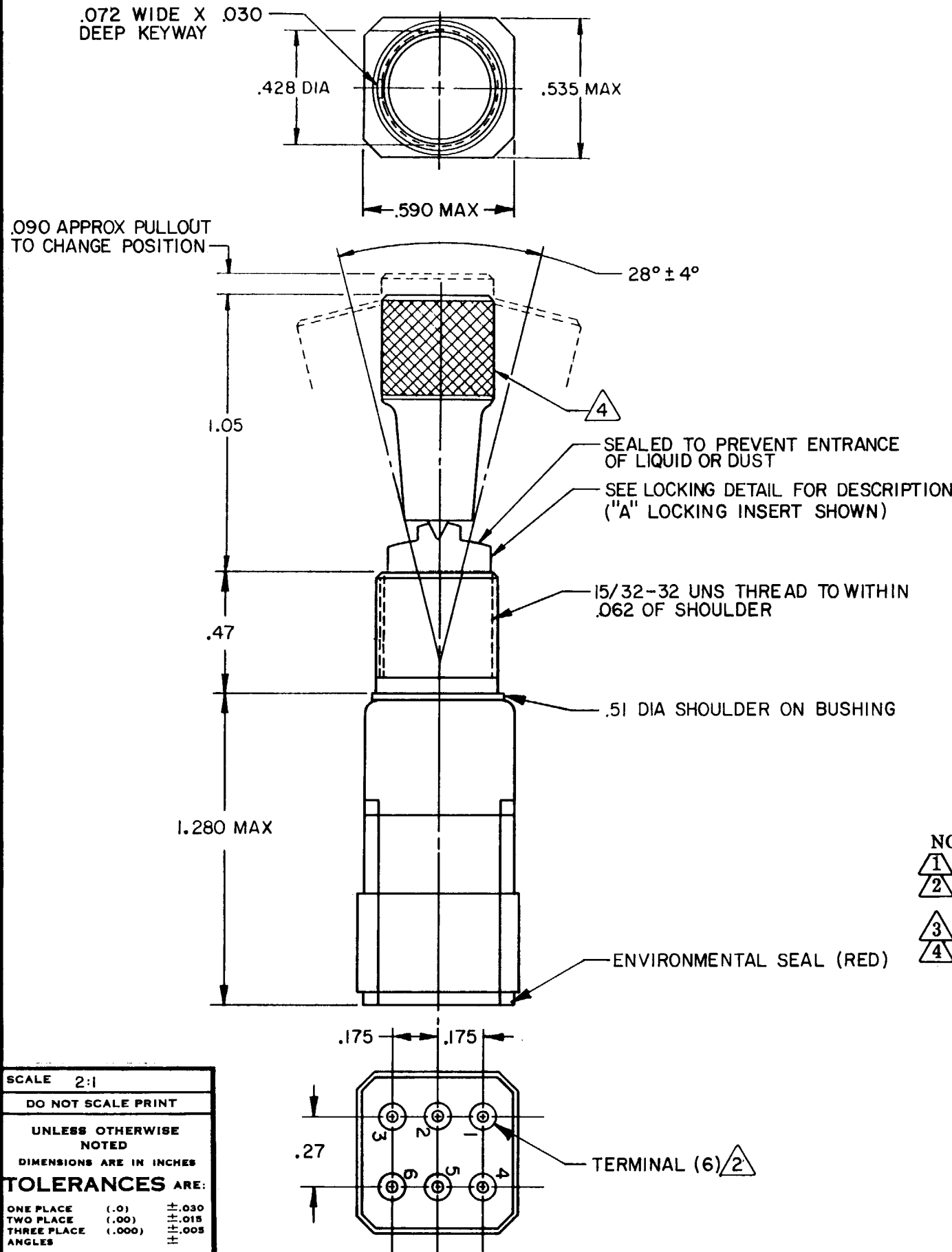
CATALOG  
LISTING

AVAILABLE  
LOCKING  
COMBINATIONS  
FOR CONFIGURATION  
SEE LETTERING  
DETAILS

CIRCUIT MADE  
WITH TOGGLE LEVER IN  
KEYWAY  
SIDE  
(1-2,4-5)  
CENTER  
(1-2,4-5)  
OPPOSITE  
KEYWAY  
(2-3,5-6)

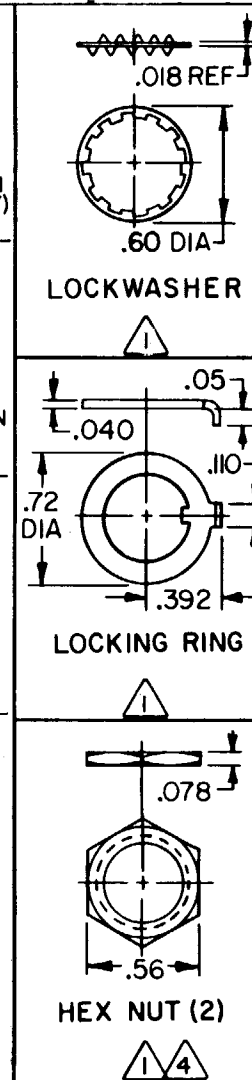
ELECTRICAL  
DATA

5 VDC .01 AMP



CATALOG LISTING	AVAILABLE LOCKING COMBINATIONS FOR CONFIGURATION SEE LETTERING DETAILS	KEYWAY SIDE (1-2,4-5)	CENTER (1-2,4-5)	OPPOSITE KEYWAY (2-3,5-6)
112TW286-1	AB,DE,FG,H,I,J,K,L,M,NP	ON	OFF	ON
112TW286-2	D,F,G	OFF	NONE	ON
112TW286-3	D,F,G	ON	NONE	ON
112TW286-2I	E,F,K,M	NONE	OFF	ON
112TW286-3I	E,F,K,M	NONE	ON	ON
112TW286-4	F	MOM OFF	NONE	ON
112TW286-5	E,F,K,L,M,N	MOM ON	OFF	ON
112TW286-6	F	MOM ON	NONE	OFF
112TW286-7	E,L,N	MOM ON	OFF	MOM ON
112TW286-8	F	MOM ON	NONE	ON
112TW286-5I	E	NONE	ON	MOM ON
112TW286-6I	E	MOM ON	OFF	NONE

"A" 3 LOCKED IN THREE POSITIONS	"B" 3 LOCKED IN CENTER AND EXTREME POSITION (KEYWAY SIDE)	"D" 3 LOCKED OUT OF CENTER POSITION	"E" 3 LOCKED IN CENTER POSITION	"F" 3 LOCKED IN EXTREME POSITION (OPPOSITE KEYWAY)
"G" 3 LOCKED IN EXTREME POSITION (KEYWAY SIDE)	"H" 3 LOCKED OUT OF CENTER AND EXTREME POSITION (KEYWAY SIDE)	"J" 3 LOCKED OUT OF CENTER AND EXTREME POSITION (OPPOSITE KEYWAY)	"K" 3 LOCKED IN CENTER AND EXTREME POSITION (OPPOSITE KEYWAY)	"L" 3 LOCKED OUT OF EXTREME POSITION (KEYWAY SIDE)
"M" 3 LOCKED OUT OF AND INTO EXTREME POSITION (OPPOSITE KEYWAY)	"N" 3 LOCKED OUT OF EXTREME POSITION (OPPOSITE KEYWAY)	"P" 3 LOCKED OUT OF AND INTO EXTREME POSITION (KEYWAY SIDE)		



- NOTES
- 1 FURNISHED UNASSEMBLED
  - 2 TERMINATION WILL ACCEPT CRIMP CONTACT CONFORMING TO M39029 / I-101
  - 3 SUFFIX MUST BE ADDED FOR DESIRED TYPE TOGGLE LOCKING
  - 4 MATTE NICKEL FINISH

Furnished under United States Government Contract No. \_\_\_\_\_  
Shall not be either released outside the Government, or used, duplicated or disclosed in whole or in part for manufacture or procurement, without the written permission of MICRO SWITCH, A Division of Honeywell, except for: (I) emergency repair or overhaul work by or for the Government, where the item or process concerned is not otherwise reasonably available to enable timely performance of the work; or (II) release to a foreign government, as the interests of the United States may require; provided that in either case the release, use, duplication or disclosure hereof shall be marked on any reproduction hereof in whole or in part.