

Mobile Control Units 2930/2940/2950

Industrial Handheld Enclosure Series



For Finishing Services, Product Support, or to Order

Call 1-301-696-9800



- Hand held enclosure for MCR and automation engineering
- Robust design (Polyamide or Polyester)
- Version with handle and integrated cable entry (Pilot 10, 20 standard)

Technical data

Material:

Pilot 10 and Pilot 20: polyamide

Pilot 30: polyester

Ingress protection:

Pilot 10 and Pilot 20: IP 65 to EN 60529

Pilot 30: IP 66 to EN 60529

Impact resistance:

7 Joule to EN 60079-0

Flammability:

Pilot 10 and 20: HB / UL 94

Pilot 30: V0 / UL 94

Color:

RAL 1003, yellow

Temperature range:

Pilot 10 and Pilot 20: -40°C to +60°C

Pilot 30: -25°C to +90°C

Included in delivery

Pilot 10/20: enclosure with handle, including cable gland M 20 x 1,5, front panel with fastening screw and wall holder

Pilot 30: two-part Polyester enclosure with self-adhesive aluminum front panel, enclosure screws and wall holder

Pilot 10/20/30

Program Range

| Enclosure type | Order No. | Encl. dimensions incl. handle | Front panel dimensions | Mounting depth |
|----------------|--------------------|-------------------------------|------------------------|----------------|
| | | W x L x H (mm) | W x H (mm) | (mm) |
| Pilot 10 | 29.40 02 00 | 70 x 93 x 190 | 61 x 59 | 67 |
| Pilot 20 | 29.30 01 00 | 115 x 93 x 200 | 106 x 69 | 67 |
| Pilot 30 | 29.50 01 00 | 164 x 116 x 295 | 70 x 280 | 71 |

Accessories

| | |
|---|--------------------|
| Mounting plate Pilot 20 | 29.31 00 00 |
| Wall holder (2 pcs with screws) | 29.60 01 00 |
| Cable gland M 20 x 1,5 | 08.10 01 20 |
| Push button and switches see page 53 - 58 | on request |



Electromechanical components

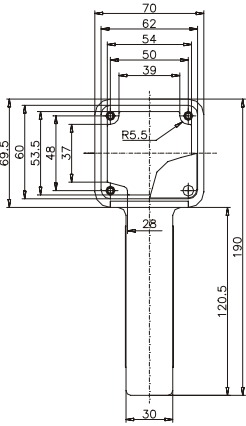
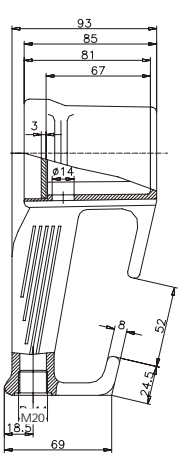
On request, we can supply equipment fitted with electro-mechanical components such as emergency stop button, acknowledge keys, hand wheel, switches, display

Dimensions

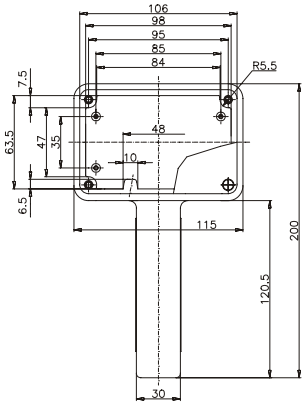
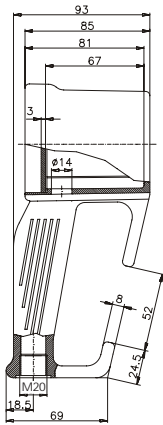


| Type | Order No. | Weight (kg) |
|----------|-------------|-------------|
| Pilot 10 | 29.40 02 00 | 0.380 |
| Pilot 20 | 29.30 01 00 | 0.500 |

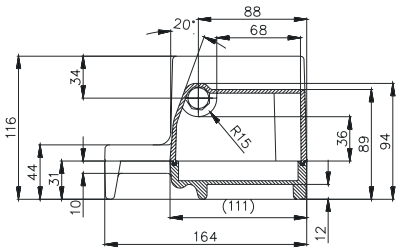
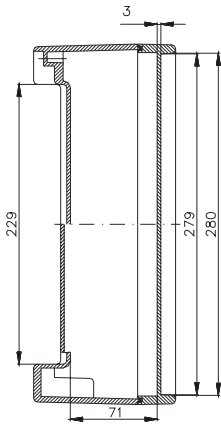
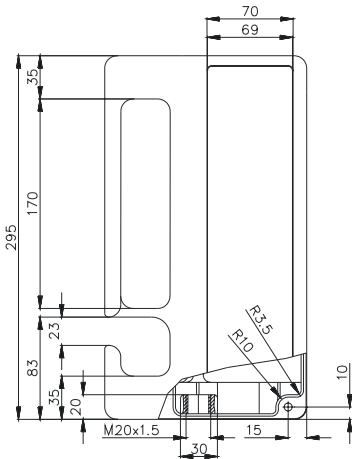
Pilot 10



Pilot 20



| Type | Order No. | Weight (kg) |
|----------|-------------|-------------|
| Pilot 30 | 29.50 01 00 | 2.200 |



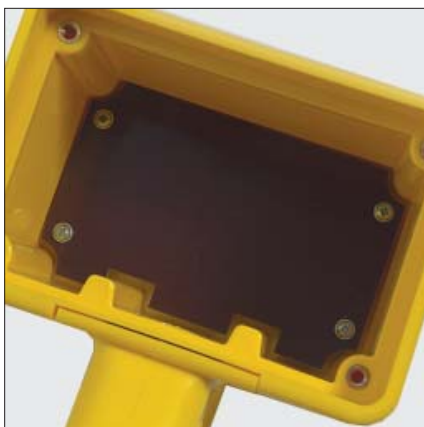
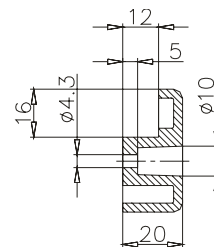
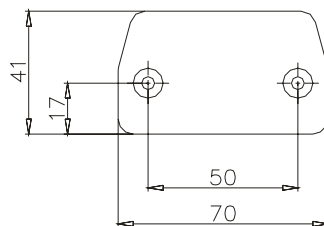
Accessories



Wall holder

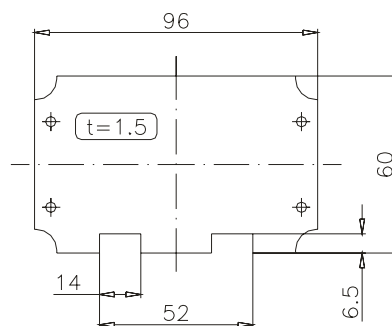
Set complete with 2 fittings and screws

Order No. 29.60 01 00



Mounting plate Pilot 20

Order No. 29.31 00 00



One and two button enclosures Pilot 10 / Pilot 20



Integrated handles on Pilot 10 and Pilot 20



Multi button enclosure Pilot 30