

LOGO(SEE NOTE 3)

F C I

87.25±0.25

13.97
PITCHPIN 1
(UPPER SLOT)PIN 1
(LOWER SLOT)81.28 $\begin{smallmatrix} +0.5 \\ -0.2 \end{smallmatrix}$

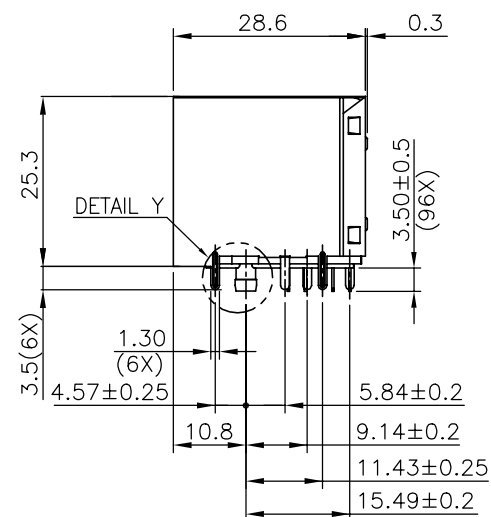
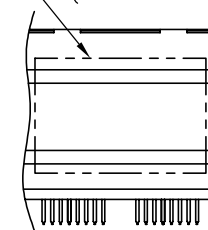
DETAIL Z

10.16±0.2 13.97 13.97 13.97 13.97 13.97

PIN 1
(LOWER SLOT)6.35±0.25
2.54±0.2
4.08±0.25
2.54±0.2PIN 1
(UPPER SLOT)

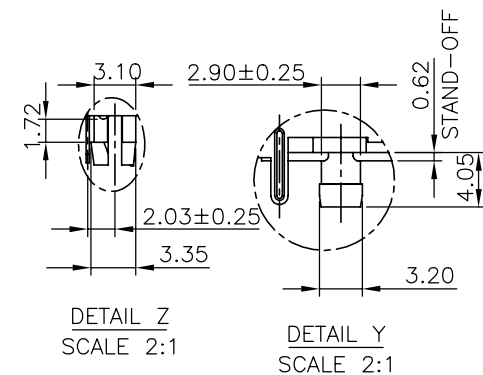
1.27±0.2

8.89±0.25

PRINT P/N & DATE CODE
(SEE NOTE 4)

BACK VIEW

mat'l. code				surface ASME Y14.5	tolerance ASME Y14.5	projection 	product family GANGED MJACK
litr	ecm no	dr	date	tolerances unless otherwise specified			title
A		WL	11/04/11	angles X.X±0.25		MM [INCH]	CAT 3 MULTIPOINT STACKED
				X.XX±0.13			2x6 WITH SHIELD, W/O LED
				X°±1°	X.XXX±0.05	scale	
		dr	WENDY CHEN	05/03/11			dwg no
		enr	WENDY CHEN	05/03/11			sheet 1 of 3
		chr	WENDY CHEN	05/03/11			size
		appd	GARY HSIEH	05/03/11			A4
sheet index	revision sheet	A	A	A			type
		1	2	3			CUSTOMER Drawing



DETAIL Z
SCALE 2:1

DETAIL Y
SCALE 2:1

FC

NOTE:

1. MATERIAL:

HOUSING & INNER HOUSING & COVER:
HIGH TEMPERATURE THERMOPLASTIC, UL94V-0, COLOR: BLACK.
CONTACTS: COPPER ALLOY.
SHIELD: COPPER ALLOY.
INNER SHIELD: COPPER ALLOY.

2. FINISH:

CONTACTS: 50u" MIN. NICKEL UNDER PLATED OVER ALL.
SELECTIVE GOLD PLATED ON CONTACT AREA,
1u" GOLD PLATED ON SOLDER TAIL.
SHIELD & INNER SHIELD: 20u" MIN. NICKEL OVER ALL.

3. LASER MARK FCI LOGO ON THE TOP OF SHIELD.

4. "DATE CODE" DESCRIPTION:

XX XX
WEEK
YEAR (EX. : 10--2010)

5. PRODUCT PERFORMANCE PER SPEC. : GS-12-0990.

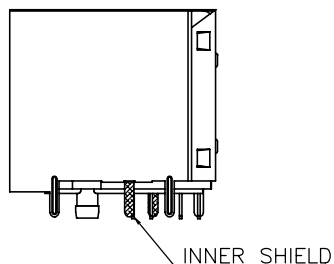
6. PACKING SPEC. : GS-14-2170.

7. THIS PRODUCT MEETS THE EUROPEAN UNION DIRECTIVE AS DESCRIBED
IN GS-22-008.

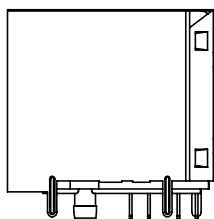
8. THE HOUSING WILL WITHSTAND EXPOSURE TO 260°C PEAK TEMPERATURE
FOR 5 SECONDS IN A WAVE SOLDER APPLICATION WITH A CIRCUIT BOARD.

9. PART NUMBER DESCRIPTION:

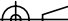
10118073-X X X X X X LF
LEAD FREE
0 : RESERVED (NOT USED)
PACKAGING
1 : TRAY
OPTIONAL BACK SHIELD TAB
0 : WITHOUT BACK SHIELD TAB
OPTIONAL RIGHT / LEFT SHIELD TAB
A : SHIELD TAB WITH INNER SHIELD
B : SHIELD TAB WITHOUT INNER SHIELD
OPTIONAL PANEL GROUND
0 : WITHOUT PANEL GROUND
LED COLOR
0 : WITHOUT LED
CONTACT AREA PLATING
1 : 15u" GOLD PLATING
2 : 30u" GOLD PLATING
5 : 1u" GOLD FLASH PLATING



10118073-XXXAXXXLF
(WITH INNER SHIELD)



10118073-XXXBXXXLF
(WITHOUT INNER SHIELD)

mat'l. code				surface ASME Y14.5 ✓		tolerance ASME Y14.5		projection 		product family GANGED MJACK									
ltr		ecn no		dr		date		tolerances unless otherwise specified						title					
A								angles		line		X.X±0.25		MM		CAT 3 MULTIPOST STACKED 2x6 WITH SHIELD, W/O LED			
										X.XX±0.13		[INCH]							
								X*±1°				X.XXX±0.05		scale		<div>FCI</div>			
				dr		WENDY CHEN		05/03/11											
				enr		WENDY CHEN		05/03/11											
				chr		WENDY CHEN		05/03/11											
				appd		GARY HSIEH		05/03/11											
sheet index		revision sheet												dwg no		sheet 3 of 3		size	
														10118073				A	
														type		CUSTOMER Drawing			