

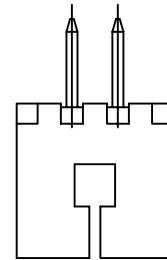
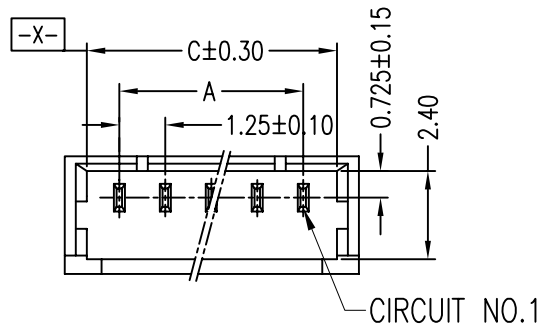
1

2

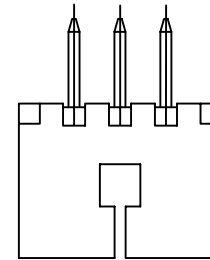
3

4

A

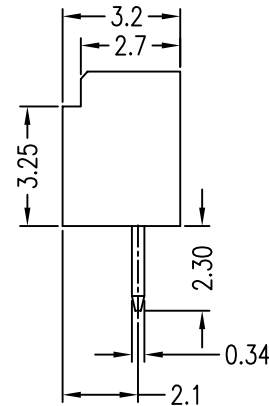
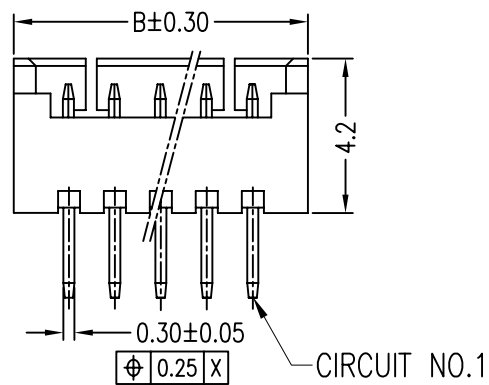


2 POS

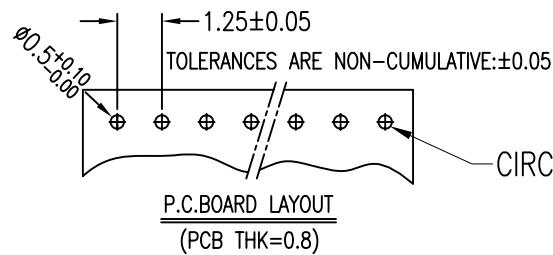


3 POS

B



C



CIRCUIT NO.1

P.C. BOARD LAYOUT
(PCB THK=0.8)

rev	ecn no	dr	date
A	T10-0145	J H	12/1/10
B	ELX-N-011322	J Z	2012-04-17
C	ELX-N-15125	TIM	2013-07-03
D	ELX-N-16376	TIM	2013-11-27

NOTES

1. SPECIFICATIONS

Current Rating: 1A AC,DC
Voltage Rating: 125V AC,DC
Temperature Range: -40°C ~ +105°C
Contact Resistance: 20mΩ Max.
Insulation Resistance: 100MΩ Min.
Withstanding Voltage: 500V AC/minute

2. Material & Finish:

Housing: Natural Thermoplastic, UL94V-0
Contact and metal hold-down: Phosphor Bronze
Plating of contact: Matte Tin or gold plating over Nickel
3. Crimping application hand tool P/N: 10118656-1000

4. Ordering Information & Dimensions:

10114829- X X X XX LF

Material

1: LCP

LF: See note A

pin counts from 02~15

Plating

0: Matte Tin

1: Gold Flash

3: Gold 30u" on contact area

Packaging

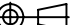


1: Tape & Reel

Part No.	Dimensions			
	POS	A	B	C
10114829-xxx02LF	2	1.25±0.10	4.25	3.05
10114829-xxx03LF	3	2.50±0.10	5.50	4.30
10114829-xxx04LF	4	3.75±0.10	6.75	5.55
10114829-xxx05LF	5	5.00±0.10	8.00	6.80
10114829-xxx06LF	6	6.25±0.15	9.25	8.05
10114829-xxx07LF	7	7.50±0.15	10.50	9.30
10114829-xxx08LF	8	8.75±0.15	11.75	10.55
10114829-xxx09LF	9	10.00±0.15	13.00	11.80
10114829-xxx10LF	10	11.25±0.20	14.25	13.05
10114829-xxx11LF	11	12.50±0.20	15.50	14.30
10114829-xxx12LF	12	13.75±0.20	16.75	15.55
10114829-xxx13LF	13	15.00±0.20	18.00	16.80
10114829-xxx14LF	14	16.25±0.20	19.25	18.05
10114829-xxx15LF	15	17.50±0.20	20.50	19.30

Note A: The LF means RoHS compliance, the housing will withstand exposure to peak temperature 260 degree C for 5 sec in the IR re-flow process.

Copyright FCI.

D

www.fciconnect.com			surface 6.4/ISO 1302		tolerance std ISO 406 ISO 1101		projection		MM		
			TOLERANCES UNLESS OTHERWISE SPECIFIED								
Dr	JASON HSU	12/1/10	ANGULAR		LINEAR	0.X	±0.25	size A4	Scale 1.000		
Eng	JASON HSU	12/1/10				0.XX	±0.15				
Chr	GARY HSIEH	12/1/10	0°	±2°		0.XXX	-	ECN			
Appr	JOSEPH HSIA	12/1/10	Product family WTB					Spec ref			
			title WTB 1.25MM WAFER 180° DIP				dwg no 10114829		Rev. D		
			catalog no				CUSTOMER		sheet 1 of 1		

1

2

3

4