

FOR 15P

REMARK:

1.CHARACTERISTICS:

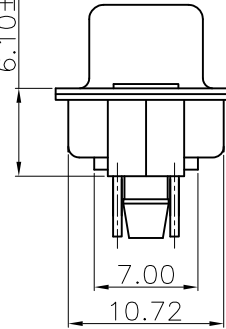
RATED VOLTAGE: 250V
RATED CURRENT: 2.5AMP
CONTACT RESISTANCE: 25mohms MAX.INITIAL,
40mohms MAX.AFTER.
INSULATION RESISTANCE: 5000Mohms MIN.at 500V DC
DIELECTRIC STRENGTH: 750VRMS
OPERATING TEMPERATURE RANGE: -55°C~105°C
INSERTION/EXTRACTION FORCE PER CONTACT:5N Max./0.2N Min.
MATING/UNMATING CYCLES:200MATINGS MIN FOR GOLD-FASH
500MATINGS MIN FOR 30u" GOLD .

2.MATERIAL:

INSULATORS: THERMOPLASTIC G.F(UL94V-0) BLACK
CONTACTS: COPPER ALLOY,GOLD(G/F or 30u") TOP OVER CONTACT
AREA,100u" Min MATTE TIN TOP OVER SOLDER AREA,
50u" Min NICKEL UNDER PLATE.
SHELL: CARBON STEEL,100u" Min NICKEL TOP OVER,
50u" Min COPPER UNDER PLATE.
HARPOON :COPPER ALLOY ,100u" Min MATTE TIN PLATED.

3. PART NUMBER DESCRIPTION:


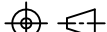
6.10±0.30

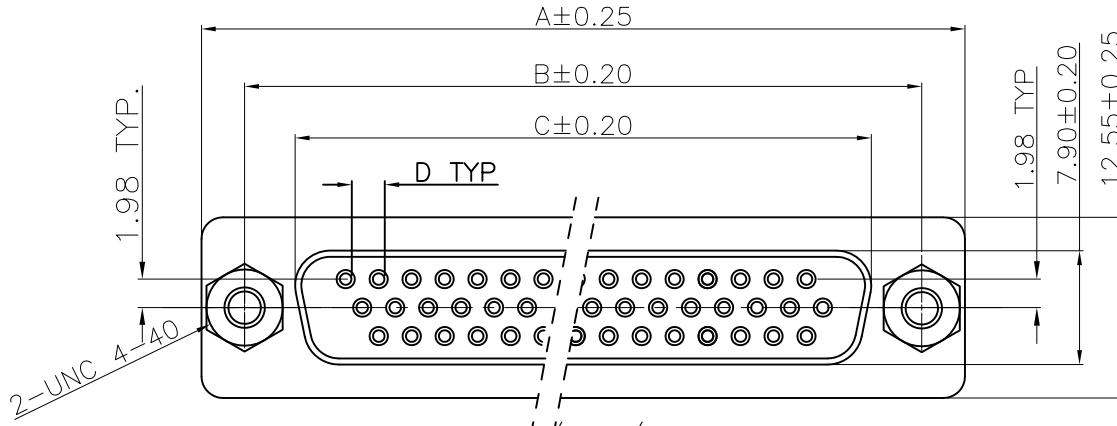


10090929-S XX X X LF
SERIES NO. TYPE S: SOCKET (FEMALE) NUMBER OF CONTACTS 15: 15-PIN 26: 26-PIN 44: 44-PIN 62: 62-PIN LF: ROHS COMPLIANT PLANGE MOUNTING OPTION X: UNC #4-40 CLINCHNUTS CONTACT FINISH 4: FLASH GOLD 6: 30u" GOLD

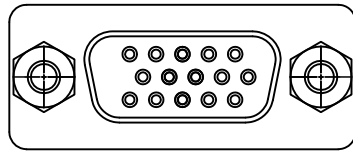
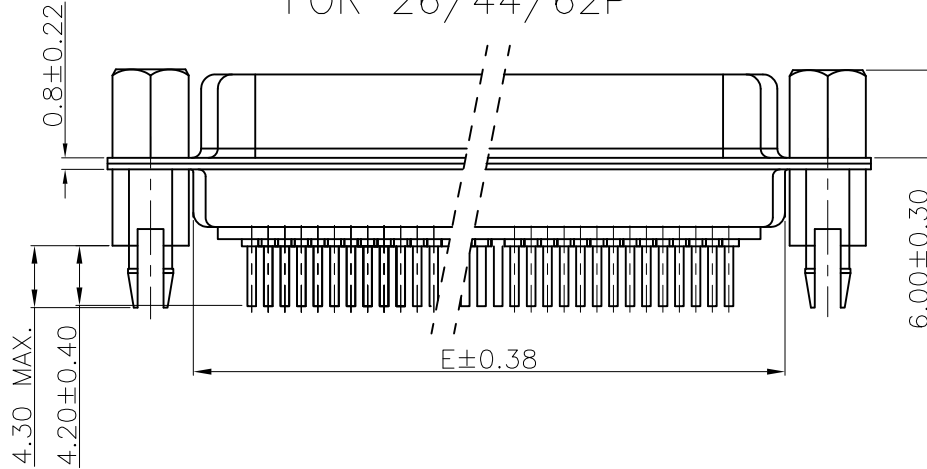
POS.	PART NO.	THREAD TYPE
15	10090929-S15*XL	UNC #4-40
26	10090929-S26*XL	UNC #4-40
44	10090929-S44*XL	UNC #4-40
62	10090929-S62*XL	UNC #4-40

POS.	A	B	C	D	E
15	30.81	24.99	16.33	2.29	19.10
26	39.24	33.32	24.66	2.29	27.75
44	53.04	47.04	38.38	2.29	41.30
62	69.32	63.50	54.84	2.41	57.40

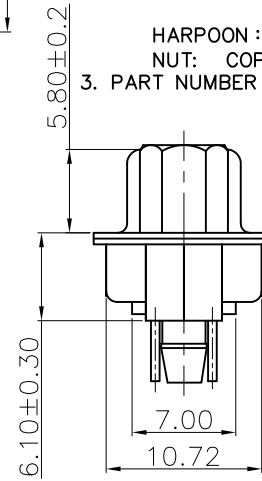
mat'l. code				tolerances unless otherwise specified				CUSTOMER COPY		FCI  www.fciconnect.com		
ltr	ecn no	dr	date	linear	.X ± 0.38				projection 	title H/D D-SUB FEMALE STRAIGHT		
A	T09-1156	J.H	12/10/09		.XX ± 0.25							
B	T10-0164	J.H	10/19/10		.XXX ± 0.10							
C	ELX-I-15500	A.B	2013/08/21		0° ± 2°							
				angles								
				dr	JASON HSU	10/19/10		MM ↔	product family D-SUB		code	
				engr	ALIAS BABU	2013/08/21			size	dwg no	TWN	
				chr	MITHUN PAUL	2013/08/21			scale 1:1	A4	10090929	sheet 1 of 5
				appd	BIJU.K.PAUL	2013/08/21						
sheet index	revision sheet	C	C	C	C	C	C					
		1	2	3	4	5						



FOR 26/44/62P



FOR 15P



REMARK:

1.CHARACTERISTICS:

RATED VOLTAGE: 250V
 RATED CURRENT: 2.5AMP
 CONTACT RESISTANCE: 25mohms MAX.INITIAL,
 40mohms MAX.AFTER.
 INSULATION RESISTANCE: 5000Mohms MIN.at 500V DC
 DIELECTRIC STRENGTH: 750VRMS
 OPERATING TEMPERATURE RANGE: -55°C~105°C
 INSERTION/EXTRACTION FORCE PER CONTACT :5N Max./0.2N Min.
 MATING/UNMATING CYCLES :200MATINGS MIN FOR GOLD-FLASH
 500MATINGS MIN FOR 30u" GOLD .

2.MATERIAL:

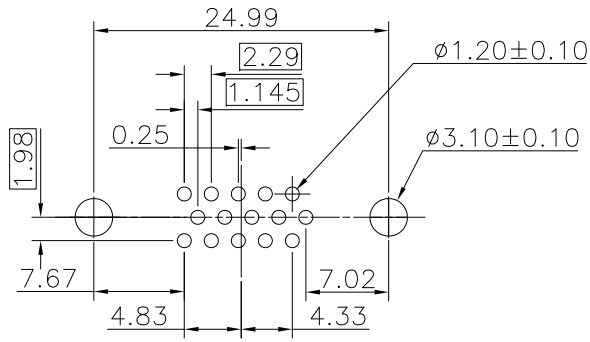
INSULATORS: THERMOPLASTIC G.F(UL94V-0) BLACK
 CONTACTS: COPPER ALLOY,GOLD(G/F or 30U") TOP OVER CONTACT
 AREA,100u" Min MATTE TIN TOP OVER SOLDER AREA,
 50u" Min NICKEL UNDER PLATE.
 SHELL: CARBON STEEL,100u" Min NICKEL TOP OVER,
 50u" Min COPPER UNDER PLATE.
 HARPOON :COPPER ALLOY ,100u" Min MATTE TIN PLATED.
 NUT: COPPER ALLOY , 50u" Min NICKEL PLATED.

3. PART NUMBER DESCRIPTION:

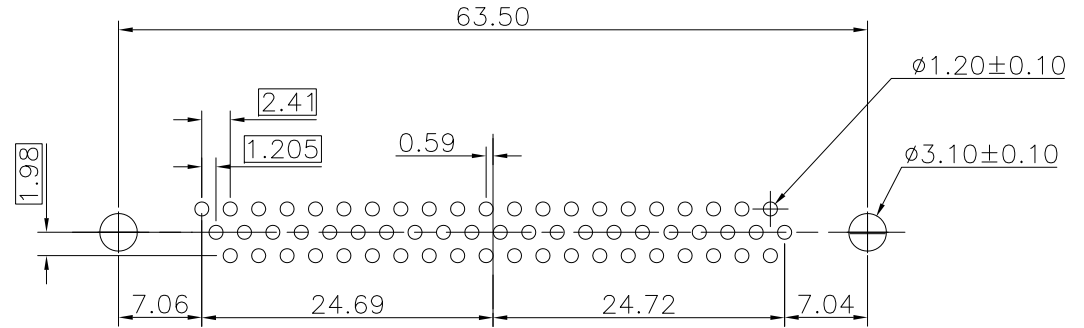
10090929-S XX X V LF
 SERIES NO. _____
 TYPE _____
 S: SOCKET (FEMALE)
 NUMBER OF CONTACTS _____
 15: 15-PIN
 26: 26-PIN
 44: 44-PIN
 62: 62-PIN
 LF: ROHS COMPLIANT
 PLANGE MOUNTING OPTION
 V: UNC #4-40 SCREWLOCKS
 CONTACT FINISH
 4: FLASH GOLD
 6: 30u" GOLD

POS.	A	B	C	D	E
15	30.81	24.99	16.33	2.29	19.10
26	39.24	33.32	24.66	2.29	27.75
44	53.04	47.04	38.38	2.29	41.30
62	69.32	63.50	54.84	2.41	57.40

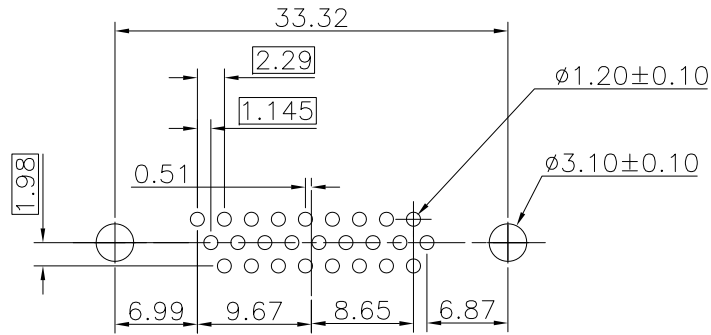
mat'l. code				tolerances unless otherwise specified		CUSTOMER COPY		FCI	
ltr	ecn no	dr	date	linear		projection		title	www.fciconnect.com
C					.X ± 0.38			H/D D-SUB FEMALE STRAIGHT	
					.XX ± 0.25				
					.XXX ± 0.10				
				angles	0° ±2°				
				dr	JASON HSU 10/19/10	MM		product family D-SUB	code TWN
				enr	ALIAS BABU 2013/08/21	scale		size dwg no	sheet 2 of 5
				chr	MITHUN PAUL 2013/08/21	1:1		10090929	
				appd	BIJU.K.PAUL 2013/08/21				
sheet index	revision sheet								



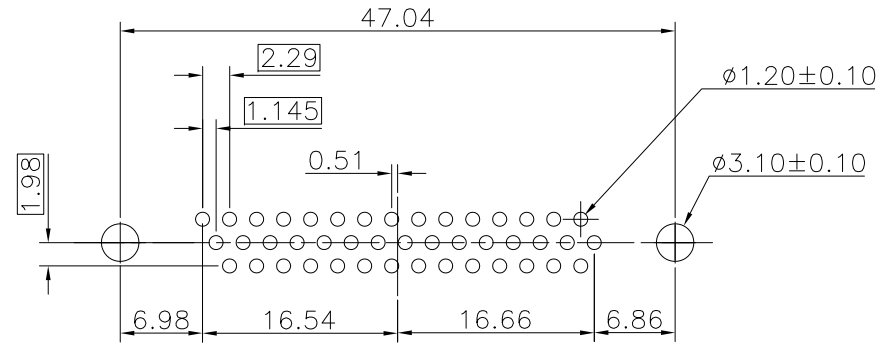
P.C.B LAYOUT(FOR 15P)



P.C.B LAYOUT(FOR 62P)



P.C.B LAYOUT(FOR 26P)



P.C.B LAYOUT(FOR 44P)

mat'l. code				tolerances unless otherwise specified		CUSTOMER COPY		FCI	
ltr	ecn no	dr	date	linear	.X ± 0.38	projection	title	www.fciconnect.com	
C					.XX ± 0.25				
					.XXX ± 0.10				
				angles	0° ± 2°		H/D D-SUB FEMALE STRAIGHT PCB		
				dr	JASON HSU 10/19/10	MM	product family D-SUB	code	
				enr	ALIAS BABU 2013/08/21			size dwg no	
				chr	MITHUN PAUL 2013/08/21			sheet	
				appd	BIJU.K.PAUL 2013/08/21	scale	A4	10090929	3 of 5
sheet index	revision sheet								

