

PRODUCT NUMBER  
10075024-X01-XXXLF

PLATING

S = 0.38µm GOLD ON CONTACT AREA  
2µm MIN MATTE TIN ON TAIL  
OVER 1.27µm MIN NICKELG = 0.76µm GOLD ON CONTACT AREA  
2µm MIN MATTE TIN ON TAIL  
OVER 1.27µm MIN NICKELF = GOLD FLASH ON CONTACT AREA  
2µm MIN MATTE TIN ON TAIL  
OVER 1.27µm MIN NICKELLEAD FREE  
RoHS COMPATIBLE  
NOTE 6PACKAGING  
NOTE 5POSITIONS PER ROW  
02 TO 25

SEE NOTE 9

## NOTES:

1. MATERIAL HOUSING: HIGH TEMP. THERMOPLASTIC  
UL 94V-0, COLOR BLACK
2. MATERIAL TERMINAL: COPPER ALLOY
3. TO DETERMINE DIMENSIONS:  
N = NUMBER OF POSITIONS PER ROW
4. 7N MIN. PIN RETENTION IN EITHER DIRECTION.
5. PACKAGING:
  - = PLASTIC BOX
  - U = TUBE WITHOUT PICK UP CAP  
AVAILABLE FROM 03 TO 25 POS PER ROW
  - P = TUBE WITH PICK UP CAP  
AVAILABLE FROM 03 TO 25 POS PER ROW
  - A = TAPE AND REEL WITH PICK UP CAP INSTALLED  
IN THE CENTER OF THE PRODUCT FOR PICK AND PLACE  
SEE TA 884 FOR PRODUCT AVAILABILITY.

## 6. RoHS COMPATIBLE PRODUCT SPECIFICATIONS

## a - PLATING:

- "LF" MEANS THE PRODUCT IS LEAD-FREE,  
2µm MINIMUM MATTE TIN OVER 1.27µm  
MINIMUM NICKEL UNDERPLATE.

## b - MANUFACTURING PROCESS COMPATIBILITY

- THE HOUSING WILL WITHSTAND EXPOSURE TO  
260°C PEAK TEMPERATURE FOR 30 SECONDS MAX  
IN A CONVECTION, INFRA-RED, OR VAPOR PHASE  
OR REFLOW OVEN

## c - LABELLING:

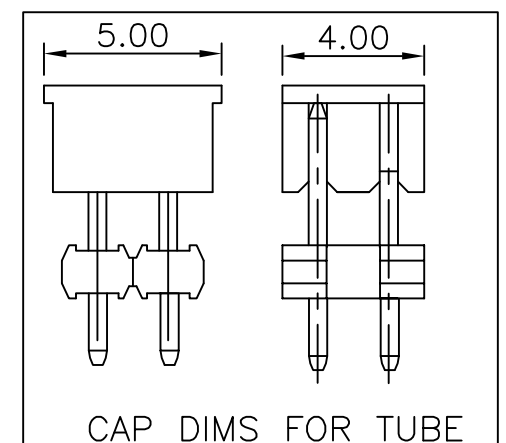
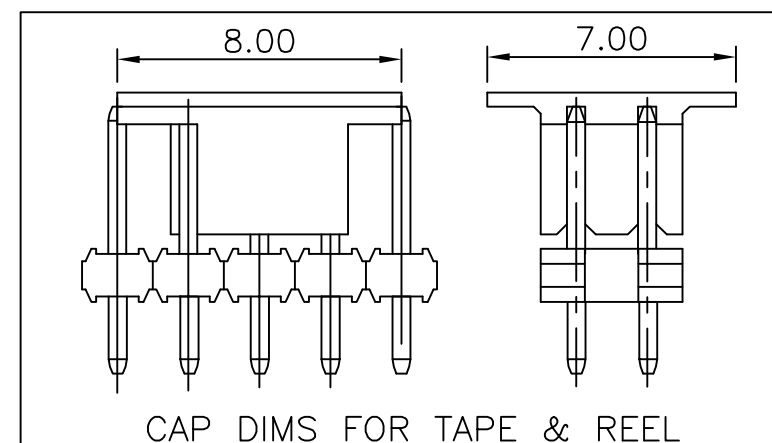
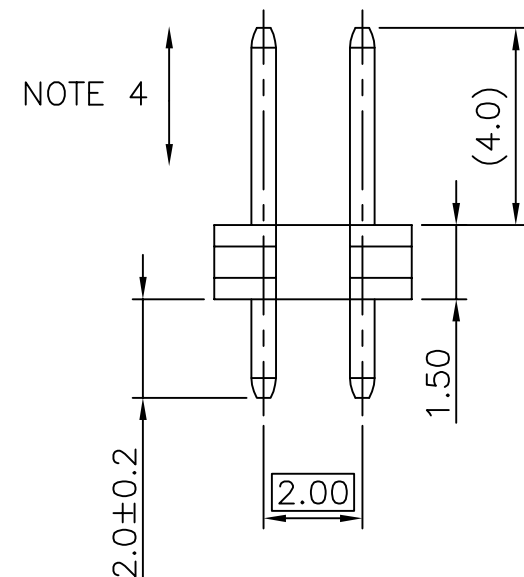
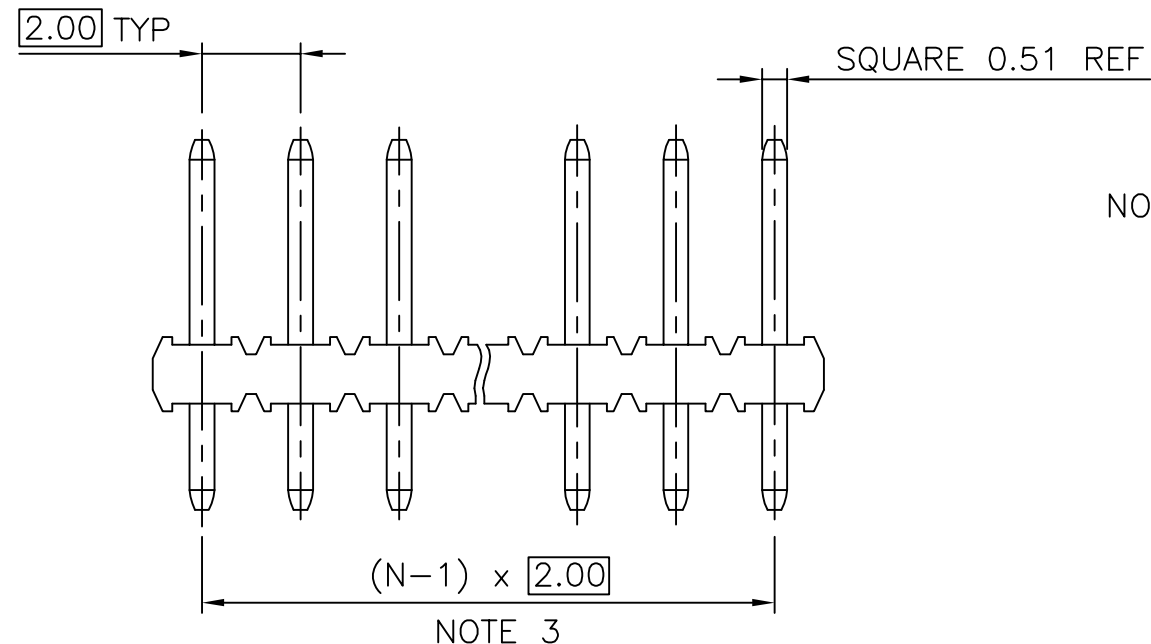
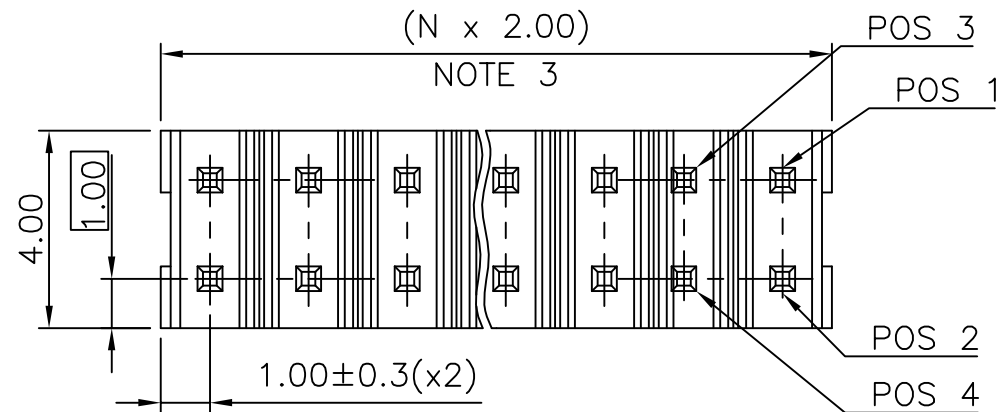
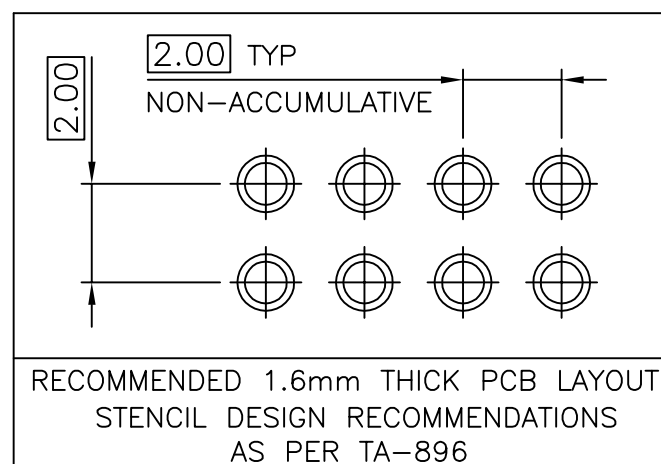
- MEETS PACKAGING SPECS AS PER GS-14-920


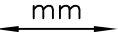

## d - LEGAL STATEMENT : SEE GS-22-008

## 9. OPTIONAL LETTER:

- FOR FULL LOADED PRODUCT USE -
- FOR POLARIZED VERSIONS, SEE TABLE

OPTIONAL LETTER FOR POLARIZED VERSION	MISSING PIN POSITION
A	20



mat'l. code				surface ISO 1302 ✓		tolerance ISO 406 ISO		projection 1101 		product family MINITEK									
ltr	ecn no	dr	date	tolerances unless		otherwise specified		 mm  scale 1:1		title UNSH HEADER 2.00 mm VERTICAL PIP									
A	F06-0326	LMU	07.01.04	angles	linear	.X	±0.3												
B	F08-0168	LMU	08.05.06			.XX	±0.13												
C	F08-0145	ELA	08.05.19			.XXX	±0.05												
D	F08-0226	LMU	08.09.22	dr	L.MULIN		07.01.04												
				engr	J.COMPAGNON		07.01.04												
				chr															
				appd	JM.C		07.01.04												
sheet index		revision sheet								dwg no 10075024									
										sheet 1 of 1									
										size A3									
										type CUSTOMER Drawing									