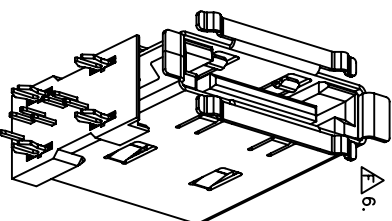


RECOMMEND P.C.B. BOARD LAYOUT  
PCB TOLERANCE:±0.05

PIN DEFINITION

ESATA	NAME	TYPE
P1	GND	
P2	A+	
P3	A-	
P4	GND	
P5	B-	
P6	B+	
P7	GND	



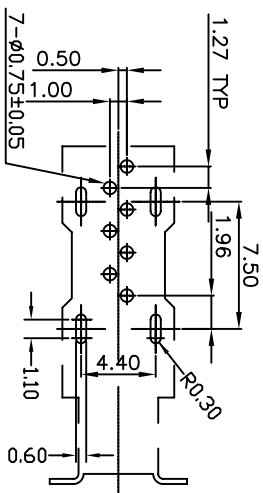
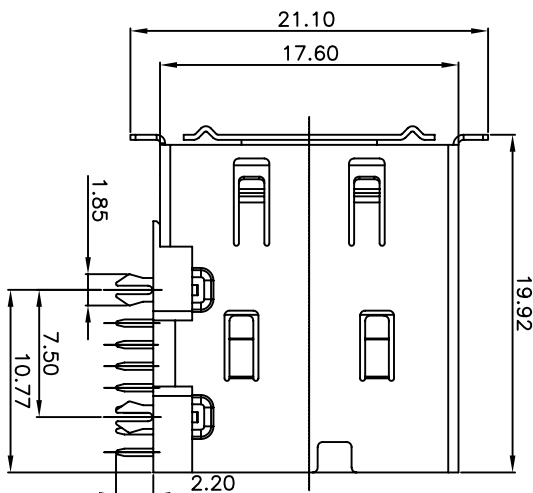
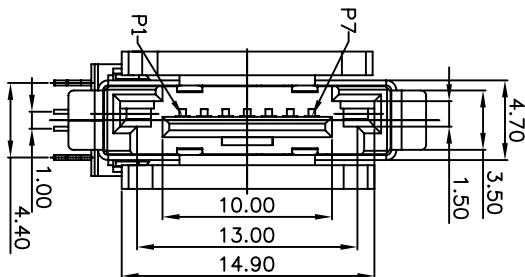
△ 6. A SYMBOL △ WILL BE NEXT TO ANY DIMENSION, VIEW OR NOTE WHICH HAS BEEN MODIFIED WITH THE CURRENT DRAWING REVISION

0: LAYOUT#1

1: 15u" GOLD PLATING  
2: G/F GOLD PLATING

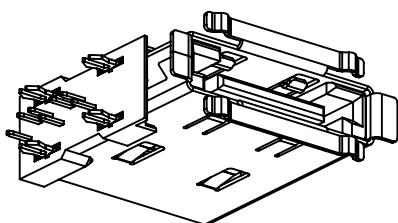
PACKING:  
BLANK: TRAY PACKING

- NOTES:
1. MATERIAL:  
HOUSING: THERMAL PLASTIC HIGH TEMP WITH 30% G/F UL94 V-0  
COLOR: BLACK  
CONTACT: COPPER ALLOY  
SHELL/BOARD LOCK: COPPER ALLOY
  2. FINISH:  
CONTACT: GOLD PLATING ON CONTACT AREA  
100u" MIN. MATT TIN PLATING ON SOLDER TAILS  
50u" MIN. NICKEL UNDERPLATING OVER ALL  
SHELL/BOARD LOCK: 50u" MIN. NICKEL PLATING OVER ALL
  3. THE HOUSING WILL WITHSTAND TO 260C FOR 10 SEC IN A WAVE SOLDER APPLICATION WITH A 1.6MM PCB
  4. PRODUCT SPEC : GS-12-386
  5. PACKING SPEC : GS-14-1109
  6. PRODUCT NUMBERING:  
10074141 - 0 0 X X LF — LEAD FREE



PIN DEFINITION

ESATA	NAME	TYPE
P1	GND	
P2	A+	
P3	A-	
P4	GND	
P5	B-	
P6	B+	
P7	GND	



6. A SYMBOL  WILL BE NEXT TO ANY DIMENSION, VIEW OR NOTE, WHICH HAS BEEN MODIFIED WITH THE CURRENT DRAWING REVISION

1: 15u" GOLD PLATING  
2: G/F GOLD PLATING  
PACKING:  
BLANK: TRAY PACKING  
1: 10u" MIN. MATT TIN PLATING ON SOLDER TAILS  
50u" MIN. NICKEL UNDERPLATING OVER ALL  
BOARD LOCK: 50u" MIN. NICKEL PLATING OVER ALL  
80u" MIN. MATT TIN PLATING OVER ALL  
SHELL/BOARD LOCK: 50u" MIN. NICKEL PLATING OVER ALL  
3. THE HOUSING WILL WITHSTAND TO 260C FOR 10 SEC  
IN A WAVE SOLDER APPLICATION WITH A 1.6MM PCB  
4. PRODUCT SPEC : GS-12-386  
PACKING SPEC : GS-14-1109  
5. PRODUCT NUMBERING:  
10074141 -1 0 X X LF LEAD FREE

NOTES:  
1 MATERIAL:  
HOUSING: THERMAL PLASTIC HIGH TEMP WITH 30% G/F UL94 V-0  
COLOR: BLACK  
CONTACT: COPPER ALLOY  
SHELL/BOARD LOCK: COPPER ALLOY  
2. FINISH:  
CONTACT: GOLD PLATING ON CONTACT AREA  
100u" MIN. MATT TIN PLATING ON SOLDER TAILS  
50u" MIN. NICKEL UNDERPLATING OVER ALL  
BOARD LOCK: 50u" MIN. NICKEL PLATING OVER ALL  
80u" MIN. MATT TIN PLATING OVER ALL  
SHELL/BOARD LOCK: 50u" MIN. NICKEL PLATING OVER ALL  
3. THE HOUSING WILL WITHSTAND TO 260C FOR 10 SEC  
IN A WAVE SOLDER APPLICATION WITH A 1.6MM PCB  
4. PRODUCT SPEC : GS-12-386  
PACKING SPEC : GS-14-1109  
5. PRODUCT NUMBERING:  
10074141 -1 0 X X LF LEAD FREE

P.C. BOARD MOUNTING DIMENSIONS T=1.60mm  
PCB TOLERANCE: ±0.05

mat'l. code	surface	tolerance	projection	product family	533
tr	ecp no	dr	date	tolerance unless otherwise specified	angles
A	T07-1074	SLW	07-5-23	.X±0.38	
B	T08-1082	SLW	08-4-29	.XX±0.25	
C	T10-0184	SLW	10-12-14	0°±2°	.XXX±0.10
D	T-005440	SLW	11-08-31	STERLING LIN	05/2/107
E	ELX-S-007861	HKL	2011-10-17	ENG/HK LIM	2012-06-08
F	ELX-S-007879	HKL	2012-06-08	CH/HK LIM	2012-06-08
Sheet	revision	F	F	oppd/CH TAN	2012-06-08
index	sheet	1	2	3	

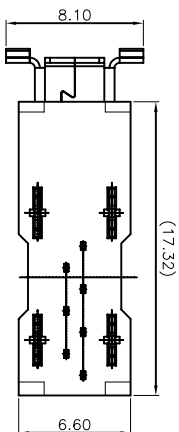
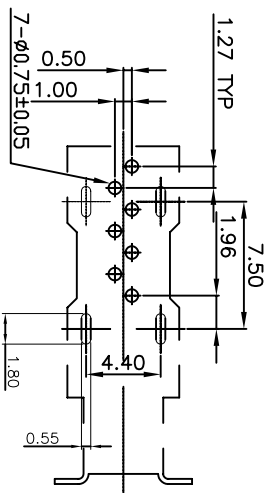
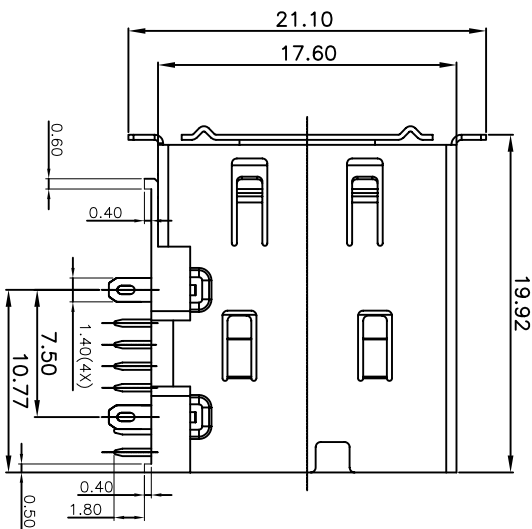
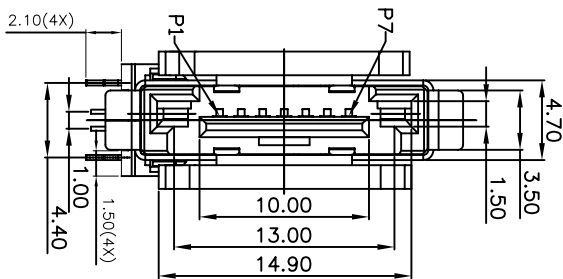


dwg no  
10074141

sheet 2 of 3

size  
A4

customer  
Drawing



PIN DEFINITION

ESATA	NAME	TYPE
P1	GND	
P2	A+	
P3	A-	
P4	GND	
P5	B-	
P6	B+	
P7	GND	

P.C. BOARD MOUNTING DIMENSIONS T=1.60mm  
PCB TOLERANCE: ±0.05

- NOTES:
1. MATERIAL:  
HOUSING: THERMOPLASTIC HIGH TEMP WITH 30% G/F UL94 V-0  
COLOR: BLACK  
CONTACT: COPPER ALLOY  
SHELL/BOARD LOCK: COPPER ALLOY
  2. FINISH:  
CONTACT: GOLD PLATING ON CONTACT AREA  
120u" MIN. MATT TIN PLATING ON SOLDER TAILS  
50u" MIN. NICKEL UNDERPLATING OVER ALL  
BOARD LOCK: 50u" MIN. NICKEL PLATING OVER ALL  
120u" MIN. MATT TIN PLATING OVER ALL  
SHELL/BOARD LOCK: 50u" MIN. NICKEL PLATING OVER ALL  
3. THE HOUSING WILL WITHSTAND TO 260C FOR 10 SEC  
IN A WAVE SOLDER APPLICATION WITH A 1.6MM PCB
  4. PRODUCT SPEC : GS-12-386
  5. PRODUCT SPEC : GS-14-1109
  5. PRODUCT NUMBERING:  
10074141 - 2 0 X X X LF — LEAD FREE
- PACKING:  
BLANK: TRAY PACKING  
1: 15u" GOLD PLATING  
2: G/F GOLD PLATING  
2: LAYOUT #3

△.6. A SYMBOL △ WILL BE NEXT TO ANY DIMENSION, VIEW OR NOTE, WHICH HAS BEEN MODIFIED WITH THE CURRENT DRAWING REVISION

mat'l. code	surface	tolerance	projection	product family
-------------	---------	-----------	------------	----------------

ltr	ec'n no	dr	date	tolerances unless otherwise specified	angles	scale	title
A	T07-1074	SLN	07-5-23		X±0.38	MM	ESATA UP RIGHT DIP TYPE
B	T08-1082	SLN	08-4-29		X±0.25		
C	T10-0184	SLN	10-12-14	0°±2°	.XXX±0.10		
D	T-005440	SLN	11-08-31	dr	STERLING LIN	05/2/107	
E	EX-5-007861	HKL	2011-10-17	eng/HK LIM		2012-06-08	
F	EX-5-007879	HKL	2012-06-08	chr/HK LIM		2012-06-08	
Sheet	revision	F	F	F	oppd/CH TAN		
Index	sheet	1	2	3			

