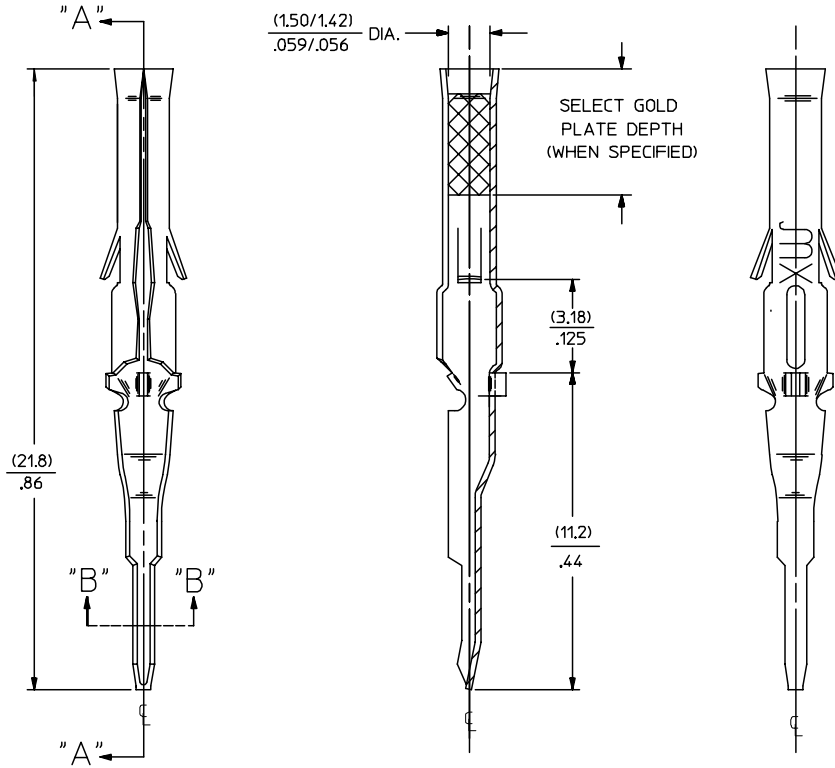
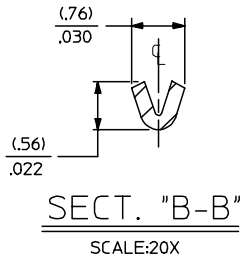
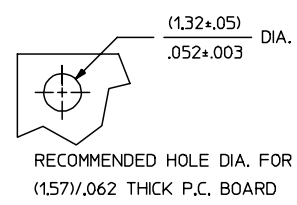
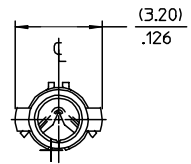


PART NO.	ENG. NO.
02-06-7103	1779-(P909)L
02-06-7104	1779-(P228)L

1779



LEGEND
 1779-(*)*-*
 P=PREPLATE
 BLANK+POSTPLATE
 FINISH CODE
 MATERIAL
 BLANK=BRASS (.020)/.008 THICK
 FORM
 L=LOOSE

- NOTES:
- MATERIAL: BRASS
 - FINISH:
 - 909 HOT TIN DIP* (.00254)/.000100 MIN.
 - 228 SELECT GOLD PLATE (.00075)/.000030 MIN. IN CONTACT AREA, SELECT TIN* (.00250)/.000100 MIN. IN TAIL AREA, OVER (.00125)/.000050 MIN. NICKEL OVERALL.
 - * THE PRIMARY SHIPPING CARTON WILL BE LABELED, 'COMPLIANT TO RoHS DIRECTIVE 2002/95/EC AND ANNEX II OF DIRECTIVE 2000/53/EC', AND CARTONS WITHOUT THIS LABEL MAY CONTAIN PRODUCT WITH TIN-LEAD.
 - PRODUCT SPECIFICATION: PS-02-06.
 - PACKAGING INFORMATION: NOT AVAILABLE
 - TERMINAL FOR USE WITH (1.57) / .062 SERIES HOUSINGS.

OBSOLETE P/N EC NO. DRAWN: JLOWE CHKD: ADERR APPR: F SMITH	QUALITY SYMBOLS ▽ = 0 ▽ = 0	GENERAL TOLERANCES (UNLESS SPECIFIED)		SCALE 8:1	DESIGN UNITS INCH	THIRD ANGLE PROJECTION	REVISE ON CAD ONLY	
				DIMENSION STYLE MM/IN		TITLE		
		4 PLACES ± --- ± ---	3 PLACES ± --- ± .005	DRAWN BY GEP	DATE 1987/11/02	TERMINAL, FEMALE (1.57) / .062 DIA P.C. TAIL TYPE		
		2 PLACES ± 0.13 ± .010	1 PLACE ± 0.25 ± ---	CHECKED BY RW	DATE 1987/11/02			
ANGULAR ± 1/2°		DRAFT WHERE APPLICABLE MUST REMAIN WITHIN DIMENSIONS		APPROVED BY RAS	DATE 1987/11/02	MATERIAL NO. SEE CHART	DOCUMENT NO. SD-1779-*	
THIS DRAWING CONTAINS INFORMATION THAT IS PROPRIETARY TO MOLEX INCORPORATED AND SHOULD NOT BE USED WITHOUT WRITTEN PERMISSION						SHEET NO. 1 OF 1		