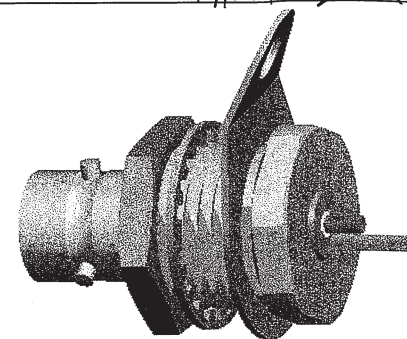
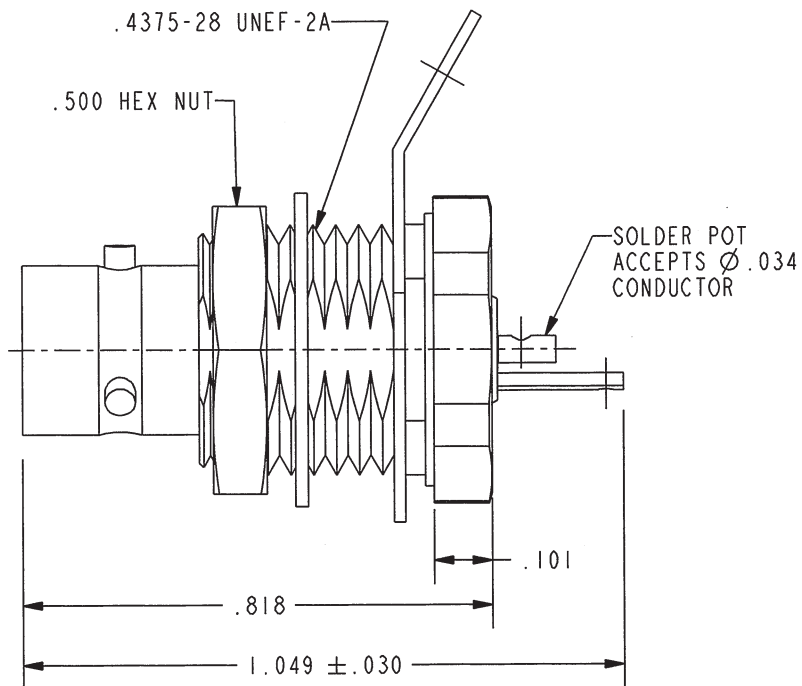
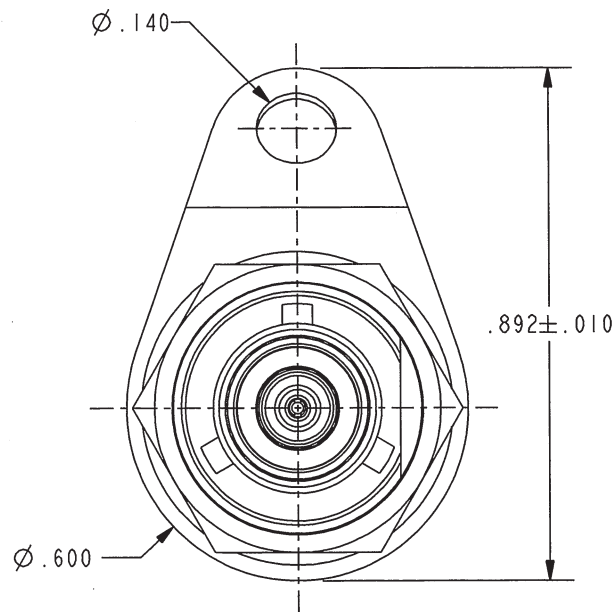


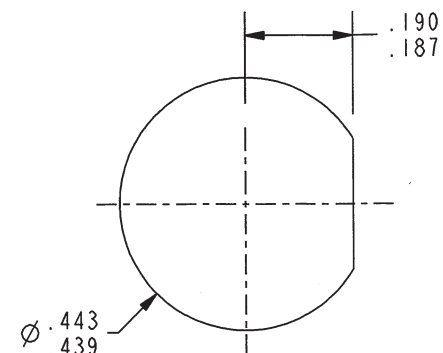
DATA CONTAINED IN THIS DOCUMENT IS PROPRIETARY TO TROMPETER ELECTRONICS INC. AND SHALL NOT BE DISCLOSED, COPIED OR USED FOR PROCUREMENT OR MANUFACTURE WITHOUT EXPRESS WRITTEN PERMISSION.

REVISIONS

REV	DESCRIPTIONS	DATE	APPROVED
G	REVISED PER ECO # 16699	9/22/09	Zm



SCALE 2/1



RECOMMENDED PANEL CUTOUT SCALE 3/1

RED INDICATES ORIGINAL

- 3. MAXIMUM PANEL THICKNESS .250
- 2. FINISH: TFS-1A (NICKEL)
- 1. SUBMINIATURE TWINAX/TRIAX REAR MOUNT SOLDER POT BULKHEAD RECEPTACLE

NOTES: UNLESS OTHERWISE SPECIFIED.

INTERPRET DRAWING PER MIL-STD-100. DIMENSIONS ARE IN INCHES AND INCLUDE FINISH THICKNESS UNLESS OTHERWISE SPECIFIED.

TOL: UNLESS SPECIFIED.
 .XX ± .02
 .XXX ± .010
 ANGLE ± 1°



DRN J. CARPENTER	06-30-08	MATERIAL:	TITLE:
CHK M.J.	9-16-09	FINISH:	BJ150
APPROVED Zm	9/21/09	SIZE	CAGE CODE
PROJ FILE NO. 3-0259	DO NOT SCALE DWG	A	14949

DRAWING NO.	REV.
3-0259	G
SCALE	DATE
3/1	2-1-82
SHEET	IC