

**MICRO SWITCH**

FREEMONT, ILLINOIS, U.S.A.  
A DIVISION OF HONEYWELL

FED. MFG. CODE 91929

**SWITCH-TOGGLE**

CATALOG LISTING  
**104TL2-12 SERIES**  
**CHART 1**

MILITARY  
STANDARDS  
NUMBER

CATALOG  
LISTING

AVAILABLE  
LOCKING  
COMBINATIONS  
FOR CONFIGURATION  
SEE LETTERING  
DETAILS

STYLE  
NUMBER

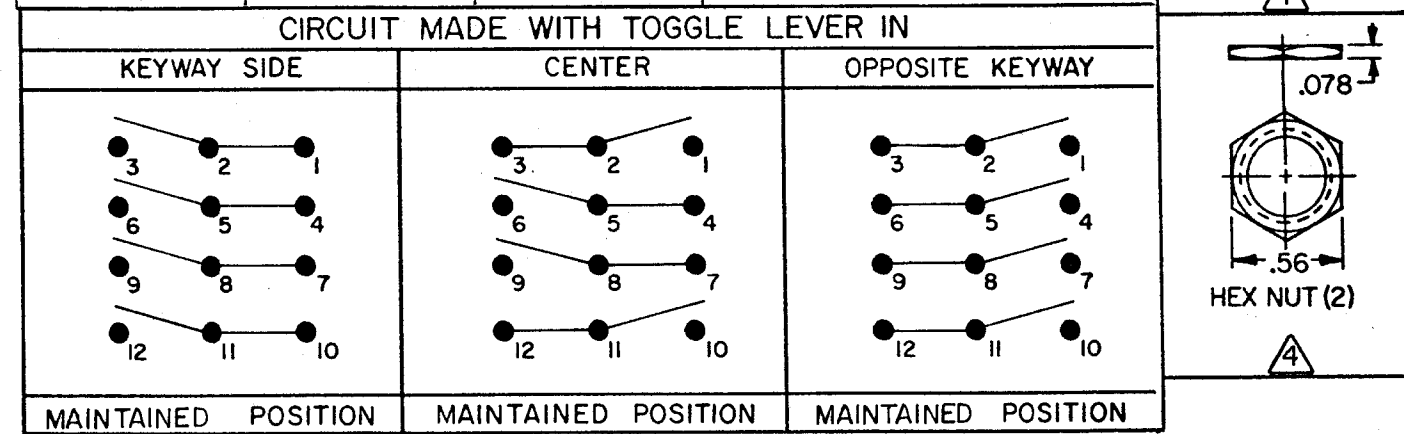
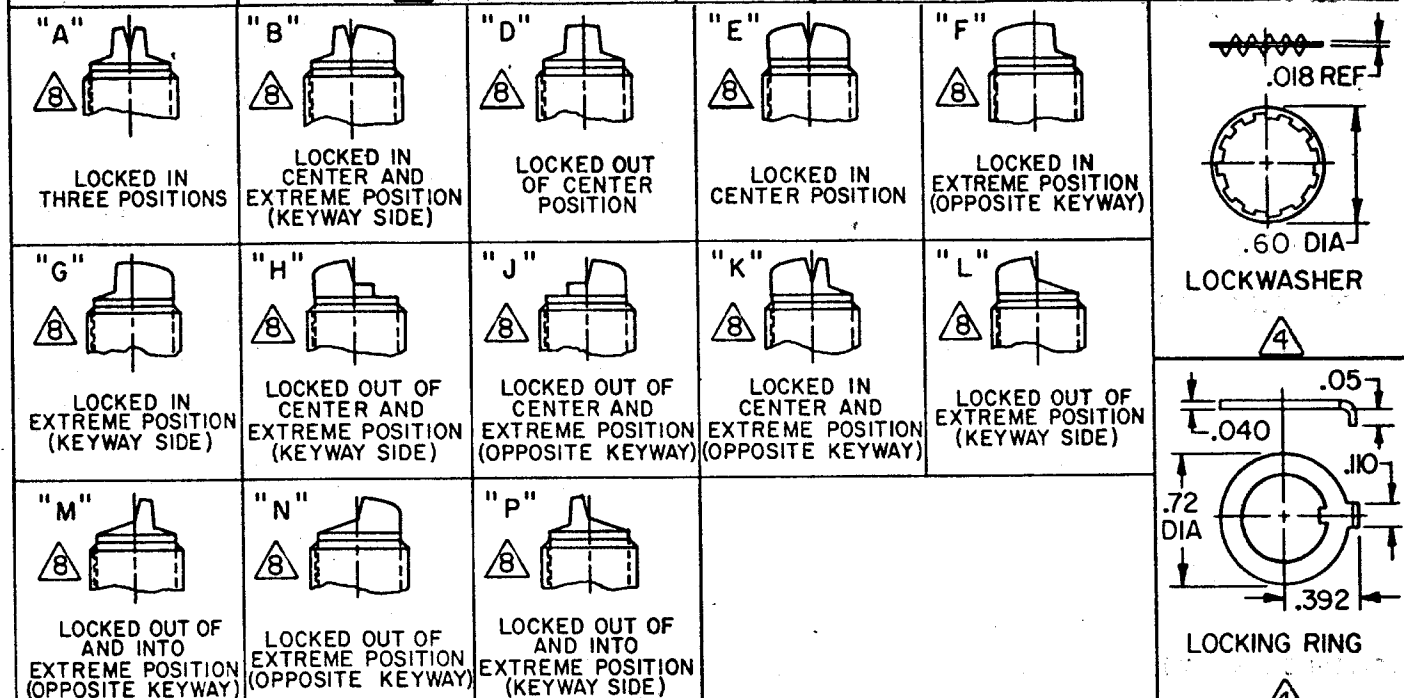
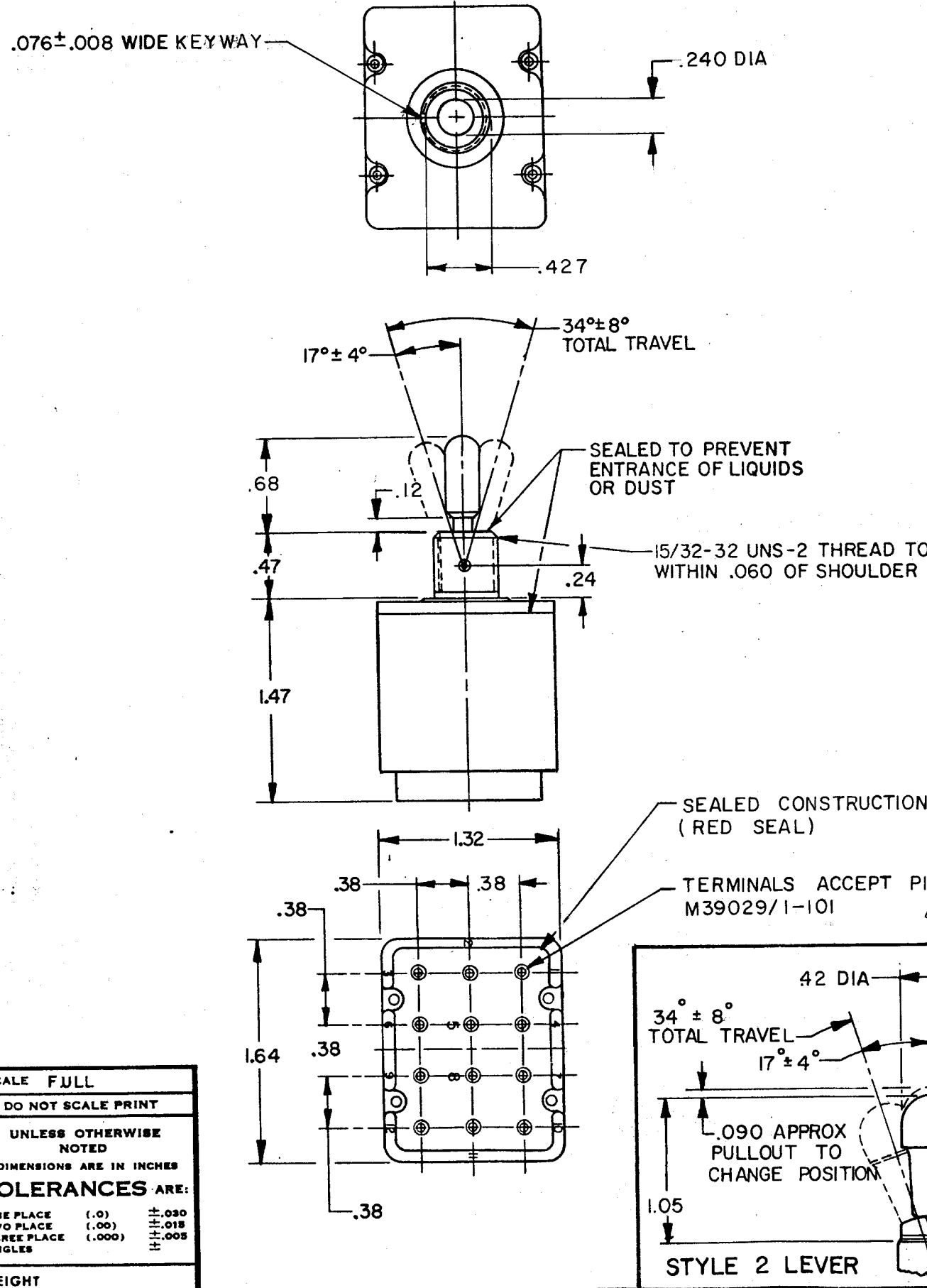
**CURRENT CAPACITY (AMPS)**

RESISTIVE LOAD					LAMP LOAD		INDUCTIVE LOAD	
DC VOLTS		AC VOLTS			30 VDC	115 VAC	30 VDC	115 VAC
30	115	250	115	230	5	4	7.5	7.5

THIS DRAWING COVERS A PROPRIETARY ITEM AND IS THE PROPERTY OF MICRO SWITCH, A DIVISION OF HONEYWELL. THIS DRAWING IS NOT TO BE COPIED OR USED WITHOUT THE APPROVAL OF MICRO SWITCH.

MS 27786 - 1	104TL2-12	NONE	1	7.5	.75	.5	7.5	6	5	4	7.5	7.5
MS 27789 - 1	104TL2-12	A,B,D,E,F,G,H,J,K,L,M,N,P	2									

**M104TL2-12 SERIES CHART 1**  
 DRAWING NUMBER  
 ISSUE  
 REPLACES  
 RELEASE NO. PR-9555  
 CHECK  
 REVISIONS  
 A WAS ETS PR-9555 G J W 13 NOV 80  
 B CD-5496 K A G 16 NOV 81  
 C CD-52204 K A G 24 OCT 82  
 D CD-56074 G J W 21 NOV 84  
 E CD-57478 T A D 12 JUL 85  
 F CD-59750 T A D 18 JUL 86  
 G CD-76454 S A D 2 DEC 94  
 DRAWN  
 G J W 13 NOV 80  
 FO-52851-A



- NOTES**
- SWITCHES ARE CAPABLE OF WITHSTANDING A TEMPERATURE OF 160°F CONTINUOUSLY AT FULL RATED LOAD
  - CIRCUIT DESIGNATION, MICRO SWITCH CATALOG LISTING AND MS NUMBER MARKED ON SIDE OF SWITCH.
  - UNUSED TERMINAL HOLES MAY BE SEALED WITH PLUGS M82723/28-20 FURNISHED UNASSEMBLED
  - THESE UNITS ARE QUALIFIED UNDER MIL-S-3950
  - THE SEALING GROMMET SHALL SEAL ON A SMOOTH WIRE INSULATION OF .040 TO .083 DIA (16-20 GAGE)
  - SUFFIX LETTER MUST BE ADDED FOR DESIRED TYPE OF TOGGLE LOCKING. SEE CHART FOR AVAILABLE LOCKING COMBINATIONS. KEYWAY SHOWN ON LEFT SIDE

SCALE FULL  
DO NOT SCALE PRINT  
UNLESS OTHERWISE NOTED  
DIMENSIONS ARE IN INCHES  
**TOLERANCES ARE:**  
ONE PLACE (.0) ±.030  
TWO PLACE (.00) ±.018  
THREE PLACE (.000) ±.005  
ANGLES  
WEIGHT